

WELCOME TO CHARLOTTE,  
NORTH CAROLINA



# 2024 PROGRAM GUIDE

# GLMA'S 42<sup>ND</sup> ANNUAL CONFERENCE ON LGBTQ+ HEALTH

*September 30 — October 2, 2024*

[glma.org/conference](https://glma.org/conference)

# BECOME A GLMA MEMBER

Founded in 1981, GLMA: Health Professionals Advancing LGBTQ+ Equality is the world's oldest and largest association of lesbian, gay, bisexual, transgender, and queer (LGBTQ+) health professionals and their allies. GLMA is committed to ensuring health equity for LGBTQ+ communities and equality for LGBTQ+ health professionals in their work and learning environments.

**To achieve this mission, GLMA utilizes the scientific expertise of its diverse multidisciplinary membership to inform and drive *advocacy, education, and research.***



## GLMA MEMBERSHIP BENEFITS INCLUDE:

- Networking with interdisciplinary health professionals
- Exclusive access to monthly Health Digest newsletter
- Complimentary access to Violet, the industry's first cultural competence analytics and training platform for health professionals
- Discounted Annual Conference registration
- Discounted virtual events to obtain continuing education credits
- Opportunities to contribute your expertise to support advocacy, education, and research
- Eligibility for nomination to leadership positions within GLMA and with our partners

SCAN ME



**Join GLMA today and attend our Annual Membership Luncheon on the final day of the conference - *we hope to see you there!***

# TABLE OF CONTENTS

|   |    |
|---|----|
| About the Conference .....                                  | 2  |
| Welcome to Charlotte from Vi Lyles, Mayor of Charlotte..... | 5  |
| GLMA Leadership and Staff .....                             | 8  |
| Get Involved With GLMA .....                                | 13 |
| 2024 Achievement Award Winners.....                         | 18 |
| Special Events .....  | 21 |
| The Lesbian Health Fund .....                               | 23 |
| Conference App .....  | 24 |
| Conference Agenda-at-a-Glance .....                         | 25 |
| Conference Schedule .....                                   | 26 |
| Plenaries .....   | 31 |
| Research Poster Topics.....                                 | 34 |
| GLMA Nursing Section.....                                   | 36 |
| Content Tracks.....   | 37 |
| Sponsors.....   | 44 |

*Thank you for joining us for*

## **GLMA'S 42<sup>ND</sup> ANNUAL CONFERENCE ON LGBTQ+ HEALTH**

# ABOUT THE CONFERENCE

Enjoy Complimentary  
Attendee Wifi Access at

## GLMA'S 42<sup>ND</sup> ANNUAL CONFERENCE ON LGBTQ+ HEALTH

Stay connected throughout the event  
with the conference WiFi network!

Network: **GLMA2024!**  
Password: **glma2024ac**

**GLMA** Health  
Professionals  
Advancing  
LGBTQ+ Equality

We are committed to making a positive impact both during and after our conference. We are proud to announce that all leftover food from this event will be donated to **Feeding Charlotte**.

Redirecting surplus food to those in need is one step toward addressing hunger-driven health inequities in the local Charlotte community.



## FEEDING CHARLOTTE

FOOD IS LOVE, NOT WASTE.

## SPECIAL THANK YOU TO OUR CONFERENCE ORGANIZERS

### MEETING MASTERS, INC.

Meeting Masters Inc. has mastered the art of planning, executing, evaluating, and recapping flawless meetings, conferences and incentive programs.

*Thank you, Meeting Masters, for your ongoing support of GLMA's Annual Conference!*



**Debbie Cooke**

*President and CEO*

**Kyle Cooke**

*Conference Planning  
Consultant*

**Kristyn Short**

*Conference Planning  
Consultant*

# ABOUT THE CONFERENCE

***GLMA's Annual Conference on LGBTQ+ Health is the premier scientific gathering shaping the future of LGBTQ+ health care.***

Since its inception in 1981, **GLMA's Annual Conference on LGBTQ+ Health** has brought together interdisciplinary health professionals, students, and trainees to address the unique health needs of LGBTQ+ individuals and families.

The conference is open to health care providers of all disciplines, researchers, academics, health administrators, policy experts, advocates, and all LGBTQ+ health supporters. The conference aims to optimize the mental and physical well-being of LGBTQ+ individuals across all age groups, considering the intersections of sexual orientation, gender identity, and other identities.

## 2024 CONFERENCE THEME: PRACTICE WITH PRIDE

This year's conference theme, **Practice with Pride**, serves as a powerful reminder of the collective power of pride as we shape a better and healthier future for the LGBTQ+ community. The theme underscores the profound connection between LGBTQ+ representation, allyship, and health equity, recognizing that a healthcare system that authentically reflects and respects the diversity of the population it serves is better equipped to address the unique needs and challenges faced by LGBTQ+ individuals.

**By practicing with pride, health professionals create a more inclusive and equitable healthcare landscape for everyone.**

### CONFERENCE GOALS

The mission of GLMA's 42nd Annual Conference on LGBTQ+ Health is to educate health professionals and health professional students about the unique health needs of the LGBTQ+ community. This includes the needs of LGBTQ+ health professionals and patients. The Annual Conference also aims to encourage and report on research into the health needs of LGBTQ+ people.

### LEARNING OUTCOMES

- Identify resources and avenues for health care for the LGBTQ+ population;
- Describe recent research and advances in health care delivery specific to the LGBTQ+ patient population;
- Incorporate strategies for advocating for LGBTQ+ health care into practice.

# EMPOWERED AGAINST POX

Mpox vaccination is recommended  
for at-risk individuals aged  $\geq 18$  years old

Gay, bisexual, and other men who  
have sex with men, transgender or  
nonbinary people with certain risk  
factors are among those at

**highest risk for mpox**



**Learn more about  
mpox vaccination**

**3 out of 4 at-risk**  
individuals are unvaccinated  
or have not completed the  
2-dose series

At Bavarian Nordic, a firm focus  
on vaccines stands at the core  
of everything we do.  
Visit [bnvaccines.com](https://bnvaccines.com) to learn more.

# WELCOME TO CHARLOTTE



## OFFICE of MAYOR VI LYLES

600 East Fourth Street  
Charlotte, NC 28202  
[Charlottenc.gov](http://Charlottenc.gov)



August 5, 2024

Greetings! As Mayor of Charlotte, I would like to welcome attendees of GLMA's 42nd Annual Conference on LGBTQ+ Health to Charlotte on September 30 - October 2, 2024.

I hope that those here from outside the Charlotte area will enjoy their stay and experience all that the largest city in the state of North Carolina has to offer, from the wonderful eateries to the Levine Center of the Arts with its variety of museums, just to name a few.

Best wishes for a successful and enjoyable event.

Yours truly,

A handwritten signature in black ink that reads "Vi Lyles".

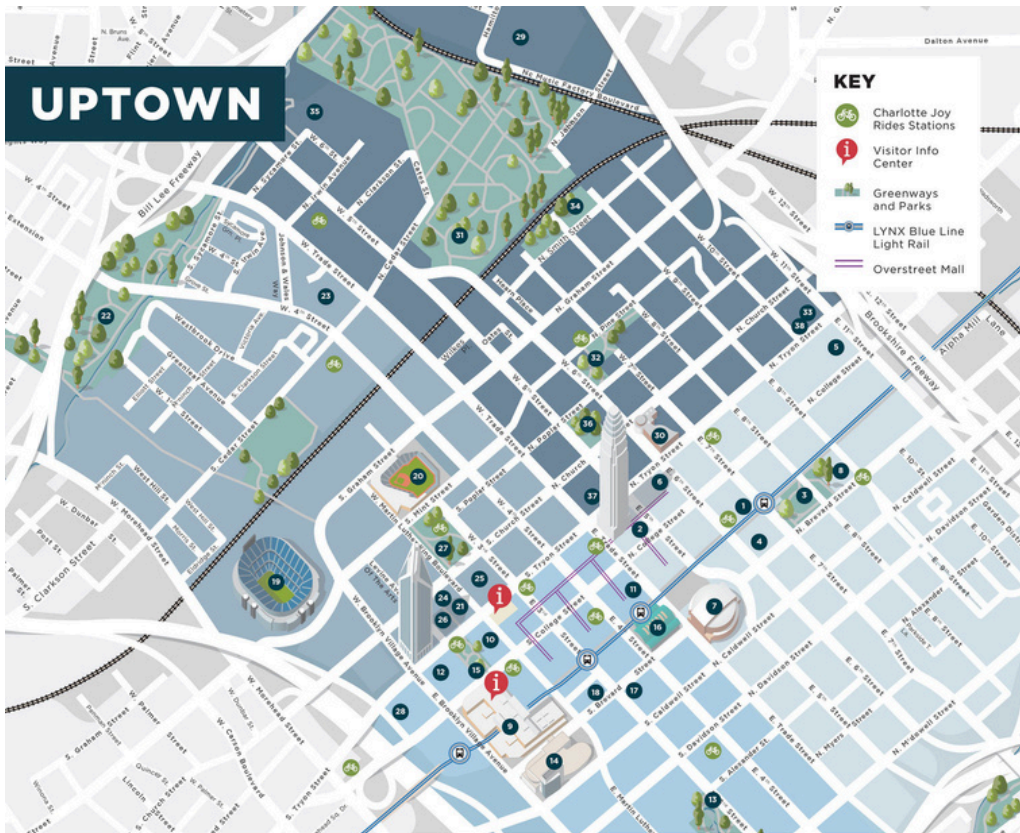
Vi Alexander Lyles  
Mayor

# WHY CHARLOTTE, NC

**GLMA is proud to bring our 42nd Annual Conference on LGBTQ+ Health to Charlotte, North Carolina!** While last year's virtual conference was a resounding success, we are excited to enjoy the in-person energy once again.

**Why Charlotte?** With a concentration of esteemed healthcare institutions, cutting-edge research facilities, and leading hospitals, Charlotte provides a dynamic backdrop for attendees to delve into the latest advancements and discoveries in the field. Plus, Charlotte's vibrant cultural scene, culinary offerings, and excellent public transportation will provide attendees with a well-rounded experience, enhancing the overall satisfaction and engagement of participants throughout the conference.

**Southern Solidarity.** In the last year, a disproportionate number of anti-LGBTQ+ bills have been introduced and passed across Southern states. By bringing GLMA's Annual Conference to the South, we not only demonstrate our community's resilience but also send a powerful message of solidarity with those on the frontlines of anti-LGBTQ+ policies and hostility. This will expand access to LGBTQ+ health education and resources in an area where LGBTQ+ affirming providers are more important than ever.



## Save BIG Around Town with the Charlotte Savings Pass

- Use on your mobile device
- Instantly delivered via text and email
- No apps to download
- Save on the Queen City's best!

**Download the Free CLT Savings Pass App Now!**



*Take advantage of Charlotte Savings Pass exclusive offers by simply presenting your phone at the place of business to redeem.*

*Courtesy of Charlotte Regional Visitors Authority.*

### FIRST WARD

- 1 The Market at 7th Street
- 10 Blumenthal Performing Arts Center
- 3 First Ward Park
- 4 ImagineOn: The Joe & Joan Martin Center Children's Theatre of Charlotte
- 5 VAPA Center
- 6 Sonia and Isaac Luski Gallery at Foundation For The Carolinas
- 7 Spectrum Center
- 8 UNC Charlotte Center City

### SECOND WARD

- 9 Charlotte Convention Center
- 10 Levine Museum of the New South
- 11 Queen City Quarter
- 12 Harvey B. Gantt Center for African-American Arts + Culture
- 13 Marshall Park
- 14 NASCAR Hall of Fame
- 15 The Green
- 16 Charlotte Transportation Center
- 17 Brooklyn Collective
- 18 Middle C Jazz

### THIRD WARD

- 19 Bank of America Stadium
- 20 Truist Field
- 21 Bechtler Museum of Modern Art
- 22 Frazier Park
- 23 Johnson & Wales University Charlotte
- 24 Knight Theater
- 25 The Alley / Brevard Court
- 26 Mint Museum Uptown
- 27 Romare Bearden Park
- 28 Museum of Illusions

### FOURTH WARD

- 29 AvidXchange Music Factory
- 30 Discovery Place Science / Accenture IMAX® Dome Theatre
- 31 Elmwood Cemetery / Pinewood Cemetery
- 32 Fourth Ward Park
- 33 McColi Center
- 34 Ninth Street Park
- 35 Ray's Splash Planet
- 36 Old Settlers' Cemetery
- 37 Monarch Market
- 38 Charlotte Ballet



ENJOY  
HANDCRAFTED  
GOODS  
**MADE WITH PRIDE**  
IN CHARLOTTE.



visitor**info**center



charlottesgotalot



charlottesgotalot

#charlottesgotalot

# HEAR FROM GLMA LEADERSHIP



**ALEX SHELDON, MA**

**GLMA Executive Director**

Welcome to GLMA's 42nd Annual Conference on LGBTQ+ Health! As GLMA's Executive Director, I'm thrilled to lead this important event for the third year, and particularly excited to return to our in-person format in my home city of Charlotte, NC. Our theme, "**Practice with Pride**," embodies inclusivity and innovation, key elements that define this event.

I'm eager to showcase the combined contributions of GLMA's members, supporters, and partners toward advancing LGBTQ+ health equity. Thank you for being part of the premier scientific event shaping the future of LGBTQ+ health!

In health,

A handwritten signature in black ink that reads "Alex Sheldon".

As the Vice President of Education at GLMA, I am excited to welcome you to our 42nd Annual Conference on LGBTQ+ Health. This event is a beacon of knowledge and growth, featuring accredited sessions to enhance expertise in LGBTQ+ health equity.

This year's conference theme, "**Practice with Pride**," celebrates GLMA's commitment to curating, promoting, and creating LGBTQ+ inclusive educational opportunities. These sessions offer cutting-edge research and best practices to advance health equity within LGBTQ+ communities, paving the way toward a healthier future for all.

In health,

A handwritten signature in black ink that reads "Chad Henson".



**CHAD HENSON  
MARTINS, MD**

**GLMA VP of Education**

# MEET GLMA'S LEADERSHIP



## GLMA Board of Directors

Jona Tanguay, MMSc, PA-C,  
AAHIVS  
**President-Elect**

Jesse Joad, MD, MS  
**President**

Tracy Flynn, PhD, APRN, FNP  
**Treasurer**

Ricardo Correa, MD, EdD  
**VP of Membership**

Nick Grant, PhD, ABPP  
**Immediate Past President**

Craig Johnson, BA  
*\*Term ended June 2024*  
**Secretary**

Jorge A. Ramallo, MD, MPH,  
FACP, FAAP, AAHIVS  
**VP of Development**

Chad Henson Martins, MD  
**VP for Education**

Carey Candrian, PhD  
**VP for the Lesbian  
Health Fund**

## Board Members at Large

Noelle Marie Javier, MD  
**Member at Large**

Jared Boot-Haury, PsyD, MBA, CST  
**Member at Large**

Frances Grimstad, MD, MS  
**Member at Large**

Frank Dowling, MD,  
DFAPA, FASAM  
**Member at Large**

Alex Karydi, PhD, LMFT,  
CAC, CASAC II  
**Member at Large**

Jerry P Abraham, MD,  
MPH, CMQ  
**Member at Large**

Dannie Ceseña, MPH  
**Member at Large**

Joel Trambley, MD, PhD  
**Member at Large**

Beth Oller, MD, FAAFP  
**Member at Large**

Janelle Marra, DO,  
FAAFP, CAQSM  
**Member at Large**

Elizabeth Wong, MA  
**Health Professional in  
Training Co-Chair**

Laurel Hiatt  
**Health Professionals in  
Training Co-Chair**



## GLMA Past Board Presidents

|                   |                           |                 |                        |
|-------------------|---------------------------|-----------------|------------------------|
| 2023-Present..... | Jesse Joad, MD, MS        | 1998-1999 ..... | Kathy Oriel, MD        |
| 2021-2023 .....   | Nicholas Grant, PhD, ABPP | 1997-1998.....  | Michael Horberg, MD    |
| 2019-2021 .....   | Scott Nass, MD, MPA       | 1996-1997 ..... | Jocelyn White, MD      |
| 2017-2019 .....   | Gal Mayer, MD, MS         | 1995-1996 ..... | Val Ulstad, MD         |
| 2015-2017 .....   | Jesse Joad, MD, MS        | 1994-1995 ..... | Bob Cabaj, MD          |
| 2013-2015 .....   | Henry Ng, MD, MPH         | 1993-1994 ..... | Kate O'Hanlan, MD      |
| 2011-2013 .....   | Desiray Bailey, MD        | 1992-1993 ..... | Larry Prater, MD       |
| 2009-2011 .....   | Rebecca A Allison, MD     | 1991-1992 ..... | Jane Petro, MD         |
| 2007-2009 .....   | Jason Schneider, MD       | 1990-1991 ..... | Michael Hulton, MD     |
| 2005-2007 .....   | Robert Garofalo, MD, MPH  | 1988-1990 ..... | Elizabeth Harrison, MD |
| 2004-2005 .....   | Tri Do, MD, MPH           | 1987-1988 ..... | Peter Hawley, MD       |
| 2003-2004 .....   | Kenneth Haller, Jr., MD   | 1986-1987 ..... | David Ostrow, MD, PhD  |
| 2002-2003 .....   | Christopher Harris, MD    | 1985-1986 ..... | Alvin Novick, MD       |
| 2001-2002 .....   | William S. Gilmer, MD     | 1983-1984 ..... | Neil Schram, MD        |
| 2000-2001 .....   | Saul Levine, MD, MPA      | 1982-1983.....  | Denny McShane, MD      |
| 1999-2000 .....   | Donald I. Abrams, MD      |                 |                        |

# OPENING RECEPTION

## JOIN US

SEPTEMBER 30, 2024 | 7:00 - 9:00PM

SYMPHONY FOYER (EXHIBIT HALL)

*The opening reception was made possible  
through the support of our sponsor:*



Memorial Sloan Kettering  
Cancer Center

## FEATURING

- Remarks from GLMA Leadership & Event Partners
- Open bar
- Carolina BBQ Slider station with vegetarian options
- Photobooth & 360 Photobooth by PoseitUp Charlotte to capture conference memories!
- Please bring your **conference badge** - this is your entry ticket to this event!

Don't miss the show by local drag performers from Vanity House!

*the* Vanity House



Miss Charlotte Pride  
Erica Chanel



Vanna Vanity



# MEET GLMA'S STAFF



**ALEX SHELDON, MA**  
*Executive Director*



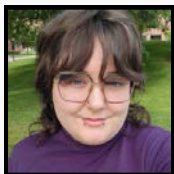
**ELI DUFFY**

*Director of Communications  
& Strategic Partnerships*



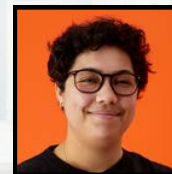
**MIRTHA GARCIA REYES, PHD**

*Health Equity  
Research Specialist*



**GRACE DEGENARO**

*Communications Intern*



**PEYTON SWIFT**

*Operations Consultant*

**Exclusive GLMA Member Event**

## GLMA'S ANNUAL MEMBERSHIP LUNCHEON

**at Le Méridien Charlotte**  
*Carolina CDE*

**03 October 2024**

**12:30-2:00 PM**

*Join us in celebrating this year's  
Achievement Award winners, gain  
insights from GLMA's leadership, and  
connect with fellow GLMA members.*



*This event for GLMA members  
will take place at the end of the  
final day of the conference.  
We hope to see you there!*

**It's not too late to  
join GLMA and  
attend this event!**

SCAN ME



YOU ARE INVITED:

# CITY LIGHTS NIGHT



October 1st

9:00-11:00pm

All conference attendees welcome to this event.

*\*Private event until doors open at 9pm.*

**Join us at**

*Le Méridien's*

*City Lights Rooftop Bar*

*\*Cash bar event. Conference badges are required for entry.*



CELEBRATE UNDER THE CITY LIGHTS  
IN CHARLOTTE, NC WITH FELLOW  
#GLMA2024 ATTENDEES!

# GET INVOLVED WITH GLMA TODAY

Put your professional expertise to use by contributing to the significant and impactful work accomplished by GLMA's committees. GLMA committees harness the collective power of YOU to accomplish our mission to achieve LGBTQ+ health equity!

## TAKE THE NEXT STEP IN YOUR CAREER – JOIN THE COMMITTEE THAT IS RIGHT FOR YOU!

### EDUCATION COMMITTEE

Develops webinar and Annual Conference programming and national guidelines for LGBTQ+ cultural competence curriculum.

Identifies additional opportunities for professional education that supports GLMA's mission to improve LGBTQ+ health equity.

Contact: [educationcommittee@glma.org](mailto:educationcommittee@glma.org)

### MEMBERSHIP & DEVELOPMENT COMMITTEE

Explores and implements innovative strategies for member recruitment and retention, targeting health professionals from diverse fields and associations. Supports activities such as donation campaigns, conference sponsorships, and donor stewardship.

Contact: [membershipcommittee@glma.org](mailto:membershipcommittee@glma.org)

### HEALTH PROFESSIONALS IN TRAINING COMMITTEE

Identifies and organizes around the needs of health professional students and those in training programs at all levels and across all disciplines. Addresses curricular reform, networking, mentorship, and programming at national conferences and symposia.

Contact: [hpitcommittee@glma.org](mailto:hpitcommittee@glma.org)

### POLICY & GOVERNMENT AFFAIRS COMMITTEE

Works with the GLMA staff and Board of Directors to develop public policy and advocacy initiatives. Participates in the planning and implementation of legislative, regulatory, and administrative advocacy.

Contact: [policycommittee@glma.org](mailto:policycommittee@glma.org)

### FINANCE COMMITTEE

Reviews and monitors GLMA's current financial landscape. Makes recommendations to ensure the organization's financial stability and growth.

Contact: [financecommittee@glma.org](mailto:financecommittee@glma.org)

### LESBIAN HEALTH FUND ADVISORY COMMITTEE

The mission of the Lesbian Health Fund is to improve the health of LGBTQ+ women and girls and their families through research. This committee develops and implements fundraising opportunities through events, corporate solicitation, and donor cultivation.

LHF is the only research fund in the world solely dedicated to the unique health needs of LGBTQ+ women and girls.

Contact: [lhf@glma.org](mailto:lhf@glma.org)

**LEVERAGE YOUR EXPERTISE &  
ENHANCE YOUR IMPACT BY JOINING  
A GLMA COMMITTEE!**

**LEARN MORE:**  
[www.glma.org/committees](http://www.glma.org/committees)

A TIP FROM A  
**FORMER  
SMOKER**



**Tobacco companies aggressively  
market to LGBTQ+ communities.**

*Angie P., age 62, and her wife Catharay*

*Tobacco companies target members of LGBTQ+ communities with cigarette marketing – in stores, magazines, and social media, as well as online and at events. Aggressive marketing of their highly addictive products contributed to Angie's years of smoking. She was finally able to quit for good at age 40.*

**You can quit.  
For free help, call 1-800-QUIT-NOW**



Scan for free resources  
to help you quit smoking





# EXPANDING ACCESS TO LGBTQ+ AFFIRMING CARE

## GLMA Delegates to AMA House of Delegates

**Jason Schneider, MD, FACP**  
*GLMA Delegate to the AMA HOD*

**Carl Streed, Jr. MD, MPH, FACP**  
*GLMA Alternate Delegate to the AMA HOD*  
\*Tenure ended 2024

**Frances Grimstad, MD, MS**  
*GLMA Alternate Delegate to the AMA HOD*  
\*Incoming delegate



**WE'RE EXPANDING ACCESS TO LGBTQ+ AFFIRMING CARE**

The LGBTQ+ Healthcare Directory continues to be the fastest growing resource of its kind in the nation.

***We're so close to our goal!***

Help us reach **4,000** providers by starting a free profile today!

***Help expand access to LGBTQ+ affirming care in your region!***

The **LGBTQ+ Healthcare Directory** is a partnership project by:



TEGAN  
AND  
SARA  
FOUNDATION



[www.lgbtqhealthcaredirectory.org](http://www.lgbtqhealthcaredirectory.org)

American Medical Association Foundation  
Proudly Supports the  
Important Work of GLMA

Improving LGBTQ+ health equity is critical for all stakeholders –  
AMAF's collaborative efforts help build the future of health care.



A group of five diverse people (three men and two women) are smiling and posing for a photo. One man has a tattoo of a lion and the word "LOVE" on his hand. The background is a bright, outdoor setting.

## JOIN THE **PRODUCT THEATER**

**Patient and Provider Conversations: Perspectives on a long-acting HIV treatment and overview of clinical data**

**Presented by:**

Gary Blick, MD

Chief Medical Officer, Health Care Advocates International

Mark Lewandowski, PharmD

AAHIVE

Brooks, Patient Ambassador

**Tuesday, October 1, 2024**

**8:45 AM - 10:00 AM EST**

**Symphony Ballroom**

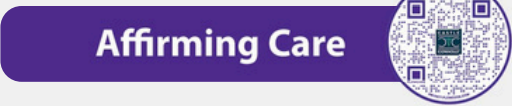
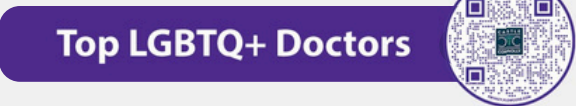
**Sponsored by:** ViiV Healthcare

Please also visit the **ViiV Healthcare** booth to learn more

## 2024 Top LGBTQ+ Doctors

Castle Connolly is proud to partner with GLMA to present the annual Top LGBTQ+ Doctors list. This list celebrates the exceptional contributions and expertise of LGBTQ+ physicians, amplifying their voices and highlighting their vital role in advancing medical care.

We are also excited to introduce a new resource identifying Top Doctors who provide LGBTQ+ Affirming Care. These healthcare providers, regardless of their own LGBTQ+ identification, are trained to deliver compassionate and safe care for the LGBTQ+ community.



GEISINGER COLLEGE  
OF HEALTH SCIENCES

Everyone deserves  
equal care.  
Every time.

**Geisinger**

#EqualInCare

**A trusting, inclusive culture where everyone can thrive — you'll find it at Geisinger.**  
Community-based, patient-centered, innovative education

- Doctor of Medicine
- Master of Biomedical Sciences
- Master of Genetic Counseling
- Associate Degree in Nursing

Ask about financial aid and our Abigail Geisinger Scholars Program, which allows you to graduate with your MD without overwhelming medical school debt.



Geisinger College of Health Sciences is committed to nondiscrimination in all employment and educational programs or activities. Concerns or questions may be directed to the Title IX coordinator whose contact information is available at [geisinger.edu/titleix](http://geisinger.edu/titleix).

# 2024 ACHIEVEMENT AWARDS

Each year, GLMA's Achievement Awards honor individuals nominated by their peers for their exceptional contributions to the LGBTQ+ community.

## THIS YEAR'S ACHIEVEMENT AWARDS CELEBRATES SIX DISTINCT AWARD CATEGORIES!

### ACHIEVEMENT IN ADVOCACY



**Adrian Shanker, BA**

He/Him

*Acting Deputy Assistant Secretary for Health Policy and Senior Advisor on LGBTQI+ Health Equity at U.S. Department of Health and Human Services (HHS)*



**Toni Newman**

She/Her

*Director of The Coalition for Justice and Equality Across Movements and the Director of The Center to End the Epidemics at National Minority AIDS Council (NMAC)*

### LOCAL COMMUNITY LEADER AWARD

#### Charlotte Trans Health

*A collective of healthcare providers dedicated to reducing health disparities for the transgender/gender diverse (TGD) community by increasing clinical competency and collaboration among healthcare providers and increasing access to competent, gender-affirming care.*



# 2024 ACHIEVEMENT AWARDS

## LIFETIME ACHIEVEMENT



**Henry H. Ng, MD, MPH**

He/They

*Director of the Center for LGBTQ+ Care and the Transgender Surgery & Medicine Program at the Cleveland Clinic*

## EARLY CAREER ACHIEVEMENT



**Tess Jewell, BA**

She/Her

*Fifth Year MD-MPH Student at the University of Wisconsin School of Medicine and Public Health*

**JOIN US ON OCTOBER 2ND FOR THE GLMA ANNUAL MEMBERSHIP LUNCHEON TO CELEBRATE OUR AWARDEES!**

## ACHIEVEMENT IN RESEARCH



**Juno Obedin-Maliver,  
MD, MPH, MAS**

She/Her

*Associate Professor of Obstetrics, Gynecology, Epidemiology & Population Health at Stanford University School of Medicine*

## ACHIEVEMENT IN PRACTICE



**Terry A. Hackworth,  
DNP, MBA, APRN, NP-C**

He/Him

*Nurse Practitioner with AvitaCare Atlanta*



We're here,  
we're queer,  
and we want  
your attention.

**UpHouse is a queer-owned marketing and PR agency. We help healthcare organizations and non-profits build advocacy and awareness campaigns that get noticed.**

Visit our booth or book a 15-minute chat with us!  
We offer non-profit rates.



@uphouseinc | uphouseinc.com

# SPECIAL EVENTS



|                                       |                         |                         |
|---------------------------------------|-------------------------|-------------------------|
| OPENING RECEPTION                     | SYMPHONY FOYER          | SEPT 30   7:15 - 9:00PM |
| SPECIAL SESSION: VIIV PRODUCT THEATER | SYMPHONY BALLROOM       | SEPT 30   12:00-1:30PM  |
| MORNING WALK/RUN WITH GLMA LEADERSHIP | OUTSIDE HOTEL FRONT     | OCT 1   6:30 - 7:30AM   |
| MORNING YOGA                          | GOVERNORS 4             | OCT 1   6:30 - 7:30AM   |
| HPIT COMMUNITY BREAKFAST              | CAROLINA E              | OCT 1   7:30 - 8:30AM   |
| SPECIAL SESSION: VIIV PRODUCT THEATER | SYMPHONY BALLROOM       | OCT 1   8:45 - 10:00AM  |
| AMA LUNCHEON INVITE ONLY              | GOVERNORS 4-6           | OCT 1   12:45 - 1:45PM  |
| LESBIAN HEALTH FUND RECEPTION         | CJ'S SPEAKEASY          | OCT 1   7:00-8:00PM     |
| MOVIE NIGHT: EVERYBODY'S WORK         | CAROLINA D              | OCT 1   7:00 - 8:15PM   |
| CITY LIGHTS NIGHT                     | CITY LIGHTS ROOFTOP BAR | OCT 1   9:00-11:00PM    |
| GLMA ANNUAL MEMBERSHIP LUNCHEON       | CAROLINA CDE            | OCT 2   12:30 - 2:00PM  |

**JOIN US ON THE MAT FOR A FREE MORNING**

## YOGA CLASS

ALL LEVELS FLOW WITH LOCAL CLT INSTRUCTOR

**BROOK MINNOCK, FNP, RYT-200 (SHE/HER)**

Come as you are—we encourage attendees of all experience levels.

**TUESDAY**  
6:30-7:30AM

**Governors 4**  
at Le Méridien Charlotte

*\*Limited yoga mats provided, hotel towels available for attendees.*

## Morning Walk/Run!

Join GLMA President & President-Elect with fellow attendees this Tuesday!

Time: 6:30 - 7:30am

Tuesday  
**01**  
October 2024

at Le Méridien Charlotte

Hit the ground running with GLMA Leadership - attendees of all paces welcome!

If you would like to participate in the walk-run please meet the group outside in front of the hotel at 6:20am promptly.

# Referring your patients to MSK has never been easier.



## 3 ways to refer a patient:

- Call 833-315-2722
- Email [referapatient@mskcc.org](mailto:referapatient@mskcc.org)
- Visit [msk.org/refer](https://msk.org/refer)

Scan the QR code to visit our referral webpage



Memorial Sloan Kettering  
Cancer Center





# LESBIAN HEALTH FUND

The Lesbian Health Fund (LHF), a program of GLMA, improves the health and well-being of LGBTQ+ women and girls through funding rigorous scientific research. Since its inception in 1992, LHF has funded 134 research projects, awarding over \$1.2 million in grants. Our grants are crucial catalysts to larger, multi-million dollar studies funded by federal agencies.

And today, LHF remains the only research fund dedicated solely to advancing the understanding of the unique health needs of LGBTQ+ women and girls. There is still a great need to understand how social determinants, especially race and ethnicity, influence the health and wellbeing of LGBTQ+ women and girls.

## LEARN MORE ABOUT LHF

OPEN INVITATION TO  
**THE LESBIAN HEALTH FUND**  
2024  
**ANNUAL RECEPTION**  
HEAR THE LATEST ON LHF GRANTS AND  
GRANTEES FROM GLMA LEADERSHIP  
TUESDAY, 01 OCTOBER 2024  
FROM 7:00 - 8:00 IN THE EVENING  
**CJ'S SPEAKEASY**  
at Le Méridien Charlotte

lesbian health fund  
RSVP

A program of:  
GLMA Health Professionals Advancing LGBTQ+ Equality

CASH BAR EVENT



**Carey Candrian, PhD**  
*VP of the  
Lesbian Health Fund*

# CONFERENCE APP



Our conference app **Swapcard** hosts everything you need to maximize your learning potential at this year's event!

- Use the main menu to view sessions, explore CME/CE info, or watch the “Navigate this Site” tutorial.
- Utilize the “Chat” function to connect with fellow attendees.
- Make sure to complete your Evaluations to secure your CME/CE credits! See separate *CME/CE Info Packet* to learn more.



*If you experience technical difficulties with the app at any point during your conference experience, please reach out to:*  
**Kyle Cooke**  
Conference Planning Consultant  
[kyle.cooke@meetingmasters.biz](mailto:kyle.cooke@meetingmasters.biz)



**Login with the email address you used to register to the event to get access to #GLMA2024!**

| <b>CONFERENCE SCHEDULE KEY</b>                |
|---|
| PLENARY SESSION (CME/CE)                      |
| CONCURRENT SESSION:<br>WORKSHOPS (CME/CE)     |
| CONCURRENT SESSION: ORAL<br>RESEARCH (CME/CE) |
| SPECIAL SESSION/EVENT                         |
| POSTER SESSION                                |

Sessions available for CME/CE credit are designated in blue on the schedule. This includes all plenary sessions, workshops, and oral research presentations. By attending these sessions professionals can earn CME/CE credits to further their professional development and stay updated in their respective fields. *Please look for the blue lines on the agenda for these accredited sessions.*

All plenary and keynote sessions will be recorded and available for viewing until **November 30, 2024**. Professionals can also earn CME/CE credits by viewing recorded plenary CME/CE sessions.

# AGENDA AT A GLANCE

## MONDAY, SEPTEMBER 30, 2024 - DAY 1

|               |   |
|---------------|---|
| 8:00 - 9:00   | REGISTRATION                                      |
| 9:00 - 10:30  | PLENARY I   |
| 10:45 - 11:45 | CONCURRENT SESSION I: WORKSHOPS & ORAL RESEARCH   |
| 12:00 - 1:30  | SPECIAL SESSION & LUNCH                           |
| 1:45 - 2:45   | CONCURRENT SESSION II: WORKSHOPS & ORAL RESEARCH  |
| 3:00 - 4:00   | CONCURRENT SESSION III: WORKSHOPS & ORAL RESEARCH |
| 3:00 - 5:00   | POSTER SESSION A                                  |
| 4:15 - 5:15   | CONCURRENT SESSION IV: WORKSHOPS & ORAL RESEARCH  |
| 5:30 - 7:00   | PLENARY II  |
| 7:00 - 9:00   | OPENING RECEPTION                                 |

## TUESDAY, OCTOBER 1, 2024 - DAY 2

|               |  |
|---------------|--|
| 8:30 - 10:00  | SPECIAL SESSION                                    |
| 10:15 - 11:15 | CONCURRENT SESSION V: WORKSHOPS & ORAL RESEARCH    |
| 11:30 - 12:30 | CONCURRENT SESSION VI: WORKSHOPS & ORAL RESEARCH   |
| 12:45 - 2:15  | NURSING SECTION LUNCHEON                           |
| 12:45-1:45    | AMA LUNCHEON                                       |
| 1:45 - 2:45   | PLENARY III  |
| 3:00 - 4:00   | CONCURRENT SESSION VII: WORKSHOPS & ORAL RESEARCH  |
| 3:00 - 5:00   | POSTER SESSION B                                   |
| 4:15 - 5:15   | CONCURRENT SESSION VIII: WORKSHOPS & ORAL RESEARCH |
| 5:30 - 6:30   | PLENARY IV   |
| 7:00 - 8:00   | LESBIAN HEALTH FUND RECEPTION                      |
| 7:00 - 8:15   | MOVIE NIGHT: EVERYBODY'S WORK                      |
| 9:00 - 11:00  | CITY LIGHTS NIGHT                                  |

## WEDNESDAY, OCTOBER 2, 2024 - DAY 3

|               |  |
|---------------|--|
| 8:30 - 9:45   | PLENARY V  |
| 10:00 - 11:00 | CONCURRENT SESSION IX: WORKSHOPS & ORAL RESEARCH |
| 11:15 - 12:15 | PLENARY VI                                       |
| 12:30 - 2:00  | GLMA MEMBER LUNCHEON                             |

# MONDAY, SEPTEMBER 30: DAY 1



|   |   |  |
|---|---|--|
| 8:00am - 6:30pm                             | REGISTRATION  | MECKLENBERG FOYER  |
| 9:00 - 9:30                                 | OPENING REMARKS   | SYMPHONY BALLROOM  |
| 9:30 - 10:30                                | <b>PLENARY I: Understanding LGBTQ+ Youth Health and Well-being: Key Findings from the 2023 Youth Risk Behavior Survey</b> | SYMPHONY BALLROOM  |
| <b>CONCURRENT SESSION I: WORKSHOPS</b>      |   |  |
|   | <i>WORKSHOP TITLE</i>   | <i>SESSION ROOM</i>  |
|   | Supporting Trans Peoples' Resilience and Resistance to State-Sanctioned Violence  | CAROLINA AB  |
| 10:45 - 11:45                               | A New PATH to Gender-Affirming Care   | MECKLENBERG 1  |
|   | LGBTQ+ Advance Care Planning  | MECKLENBERG 2  |
|   | Anal Cancer Screening Guidelines: Reducing the Incidence of HPV Related Anal Cancer in Men Who Have Sex with Men          | MECKLENBERG 3  |
| <b>CONCURRENT SESSION I: ORAL RESEARCH</b>  |   |  |
|   | <i>SESSION ROOM: SYMPHONY 2</i>   | <i>SESSION ROOM: SYMPHONY 3</i>  |
| 10:45 - 11:45                               | Prevalence of Distal Hypospadias Diagnosis and Subsequent Medical Interventions in Pediatric Patients                     | Establishing Best Practices for Ayurvedic Culturally Competent Healthcare of the LGBTQ+ Community                          |
|   | Shadows Over Care: Exploring the Adverse Effects of SB1580 on LGBTQ+ Access to Care and Mental Health Disparities         | What We Learned about Caregiving During the Early COVID-19 Pandemic: The Experiences of Same-Gender Loving Cisgender Women |
|   | Visibility vs. Vulnerability: Assessing Comfort in Discussing Health Information Among Trans/Gender Diverse Adolescents   | Move with Pride: Examining Physical Activity Behaviors Among Young Adult Sexual Minority Women                             |
| 12:00 - 1:30                                | <b>SPECIAL SESSION: VIIV PRODUCT THEATER</b>  | SYMPHONY BALLROOM  |
| <b>CONCURRENT SESSION II: WORKSHOPS</b>     |   |  |
|   | <i>WORKSHOP TITLE</i>   | <i>SESSION ROOM</i>  |
|   | Unlocking PrEP: Equipping Clinicians and Empowering Communities for HIV Prevention  | CAROLINA AB  |
| 1:45 - 2:45                                 | Transforming the Health System to Advance LGBTQ+ Health Equity  | CAROLINA C   |
|   | Decriminalizing Medicine: A Novel Approach to Medical Student Education About Criminalization in the Healthcare System    | MECKLENBERG 1  |
|   | The Current Policy Landscape and its Impact on LGBTQ+ Health  | MECKLENBERG 2  |
|   | Combating Mis- and Disinformation about Transgender Medical Care  | MECKLENBERG 3  |
| <b>CONCURRENT SESSION II: ORAL RESEARCH</b> |   |  |
|   | <i>SESSION ROOM: SYMPHONY 2</i>   | <i>SESSION ROOM: SYMPHONY 3</i>  |
| 1:45 - 2:45                                 | The Prevalence of Cardiovascular Disease and Associated Risk Factors among Sexual and Gender Minorities in Texas          | Identifying Persistent and Evolving Gaps in Inclusive Sexual History-Taking based on Longitudinal Assessment Data          |
|   | Intersecting Identities and Health: A Socio-Ecological Approach to Cardiovascular and Cognitive Health in Queer Latino    | LGBTQ Provider Database: A Descriptive Analysis of the Data  |

# MONDAY, SEPTEMBER 30: DAY 1



| CONCURRENT SESSION III: WORKSHOPS     |   |   |
|---------------------------------------|---|---|
|                                       | WORKSHOP TITLE  | SESSION ROOM  |
| 3:00 - 4:00                           | Working with the US Preventive Services Task Force  | CAROLINA C  |
|                                       | The Intersectionality of Identity for Indigenous 2SLGBTQ+ Individuals in the United States                              | MECKLENBERG 1   |
|                                       | Meta-therapy of Gender Care: A Trans Clinician's Take On Therapeutic Dialogue   | MECKLENBERG 2   |
|                                       | Enhancing Clinician Expertise & Advancing Health Equity for LGBTQIA+ Patients & Communities Through Fellowship Programs | MECKLENBERG 3   |
| CONCURRENT SESSION III: ORAL RESEARCH |   |   |
|                                       | SESSION ROOM: SYMPHONY 2  | SESSION ROOM: SYMPHONY 3  |
| 3:00 - 4:00                           | Isotretinoin Use in Transmasculine Patients and Its Implication on Chest Masculinization Surgery                        | Sexual, Gender, Racial, and Ethnic Identity Differences in Early Adolescent Disordered Eating                             |
|                                       | The Experience and Psychosocial Barriers of Breastfeeding/Chestfeeding in Gender Minorities                             | Sexual and Gender Diverse Youth in Texas: Reports from the Texas Youth Depression and Suicide Research Network (TX-YDSRN) |
|                                       | Experience of Induced Lactation in a Transgender Woman: Analysis of Human Milk and a Suggested Protocol                 | The Impact of 'Don't Say Gay' Bill on Healthcare and Mental Health in Florida's LGBTQIA+ Community                        |
| 3:00 - 5:00                           | RESEARCH POSTER GROUP A   | SYMPHONY 1  |
| CONCURRENT SESSION IV: WORKSHOPS      |   |   |
|                                       | WORKSHOP TITLE  | SESSION ROOM  |
| 4:15 - 5:15                           | Pride at All Ages: Building a Medical Home for LGBTQIA+ Older Adults  | CAROLINA AB   |
|                                       | Maximizing Impact: Leadership Opportunities in Health Professional Associations   | CAROLINA C  |
|                                       | Leveraging Group Model Building to Delineate Moral Distress Experienced by Pediatric Gender-Affirming Care Providers    | MECKLENBERG 1   |
|                                       | Transcending Fear: Cultivating and Celebrating Gender Euphoria in Gender Affirming Care                                 | MECKLENBERG 2   |
|                                       | Meeting Them Where They Are: Implementing Telehealth Services in a HIV Clinic to Increase LGBTQ+ Patient Engagement     | MECKLENBERG 3   |
| CONCURRENT SESSION IV ORAL RESEARCH   |   |   |
|                                       | SESSION ROOM: SYMPHONY 2  | SESSION ROOM: SYMPHONY 3  |
| 4:15 - 5:15                           | The Voice and Communication Goals Self-Assessment for All People (VOCAP): Development and Findings                      | How Do Sexual and Gender Minoritized Adults in the U.S. Perceive E-cigarette Risks and Taxes?                             |
|                                       | Gender Affirming Care Barriers of Florida's Anti-transgender Laws and its Impact in Mental Health of Gender Minorities  | Social Correlates of Low-Risk Perception Towards Substance Use and Sexual Behaviors among MSM and Trans Women             |
|                                       | Do Transgender People Really Have A Choice?: Barriers to Gender-Affirming Surgery in Non-Urban Populations              |   |
| 5:30 - 6:30                           | PLENARY II: Intersectionality in Aging: The Unique Experiences of Black LGBTQ+ Older Adults                             | SYMPHONY BALLROOM   |
| 6:30 - 7:00                           | CLOSING REMARKS   | SYMPHONY BALLROOM   |
| 7:15 - 9:00                           | OPENING RECEPTION   | SYMPHONY FOYER  |

# TUESDAY, OCTOBER 1: DAY 2



|  |  |   |
|--|--|---|
| 6:30 - 7:30                                | <b>MORNING WALK/RUN WITH GLMA LEADERSHIP</b>   | <b>OUTSIDE HOTEL FRONT</b>  |
| 6:30 - 7:30                                | <b>MORNING YOGA</b>  | <b>GOVERNORS 4</b>  |
| 7:30 - 8:30                                | <b>HPIT COMMUNITY BREAKFAST</b>  | <b>CAROLINA E</b>   |
| 8:30 - 8:45                                | <b>OPENING REMARKS</b>   | <b>SYMPHONY BALLROOM</b>  |
| 8:45 - 10:00                               | <b>SPECIAL SESSION: VIIV PRODUCT THEATER</b>   | <b>SYMPHONY BALLROOM</b>  |
| <b>CONCURRENT SESSION V: WORKSHOPS</b>     |  |   |
|  | <i>WORKSHOP TITLE</i>  | <i>SESSION ROOM</i>   |
|  | <i>The Companionship Model for Gender-Affirming Clinicians</i>   | <b>CAROLINA AB</b>  |
|  | <i>Eating Disorders in The Gender-Nonconforming Community</i>  | <b>CAROLINA C</b>   |
| 10:15 - 11:15                              | <i>Advancing LGBTQI+ Cancer Care: Lessons from Establishing a Specialized Program at NCI-Designated Cancer Center</i>  | <b>MECKLENBERG 1</b>  |
|  | <i>Recognizing Historical Injustices in Medicine and the New England Journal of Medicine: LGBTQIA+ Medical History</i>   | <b>MECKLENBERG 2</b>  |
|  | <i>Equality Rising in the Workplace: Using Data to Find (or Create) an LGBTQ+ Employer that Embraces You</i>   | <b>MECKLENBERG 3</b>  |
| <b>CONCURRENT SESSION V: ORAL RESEARCH</b> |  |   |
|  | <i>SESSION ROOM: SYMPHONY 2</i>  | <i>SESSION ROOM: SYMPHONY 3</i>   |
| 10:15 - 11:15                              | <i>Reckoning with Workplace Experiences of Transgender and Nonbinary Nurses through Digital Storytelling</i>   | <i>Accessing Assisted Reproductive Technologies in Canada for 2SLGBTQ+ Black, Indigenous and People of Color</i>        |
|  | <i>How Organizational Staff Hypothesize Salary Levels Comparing Marginalized to Privileged Groups in the Workplace</i>   | <i>Navigating the Healthcare System as a Transgender Person of Color</i>  |
|  | <i>Development of a Harm Reduction Simulation to Decrease Stigma Toward LGBTQ+ Patients with Opioid Use Disorder</i>   | <i>Exploring Social Network Composition and HIV Service Perceptions Among Black Cisgender Men and Transgender Women</i> |
| <b>CONCURRENT SESSION VI: WORKSHOPS</b>    |  |   |
|  | <i>WORKSHOP TITLE</i>  | <i>SESSION ROOM</i>   |
|  | <i>Intermediaries as Interventions: Developing Models for Supporting Health and Human Service Leaders Addressing Racial and Cultural Competency Gaps</i>   | <b>CAROLINA AB</b>  |
| 11:30 - 12:30                              | <i>Developing a Framework for Teaching LGBTQIA+ Health Using a Casebook</i>  | <b>CAROLINA C</b>   |
|  | <i>Transcend Expectations: Empowering Nurse Practitioners to Shape Trans-Affirmative Psychiatry</i>  | <b>MECKLENBERG 1</b>  |
|  | <i>PROJECT RESPECT: Promoting Respectful and Inclusive Serious Illness Care for the LGBTQ+ Community</i>   | <b>MECKLENBERG 2</b>  |
|  | <i>Be SMART with Pride: Secure Gun Storage and Protecting LGBTQ+ Youth from Firearm Suicide</i>  | <b>MECKLENBERG 3</b>  |
| <b>CONCURRENT SESSION VI ORAL RESEARCH</b> |  |   |
|  | <i>SESSION ROOM: SYMPHONY 2</i>  | <i>SESSION ROOM: SYMPHONY 3</i>   |
|  | <i>Persistent Conversion Efforts in Lebanese Healthcare: A Mixed Method Study</i>  | <i>Harmony in Diversity: Exploring the Complex Dynamics of Religion, Coming Out, and Mental Health</i>                  |
| 11:30 - 12:30                              | <i>Characteristics and Experiences of Gender-Affirming Care of Korean Transgender Adult: Interim Analysis of Korean Initiative for Transgender Health Study</i>  | <i>The Impact of Florida Legislation on Mental Health of Transgender, Non-Binary, and Gender Non-Conforming Youth</i>   |
|  | <i>We Don't Fully Understand Their Needs: Healthcare Practitioner Insights on Gender Affirming Care for Trans and Gender Diverse Students at Public University Clinics in the Western Cape, South Africa</i> | <i>Illuminating the Behavioral Health Needs of Transgender and Non-Binary Youth</i>                                     |

# TUESDAY, OCTOBER 1: DAY 2



|   |   |   |
|---|---|---|
| 12:45 - 2:15                                  | <b>GLMA NURSING SECTION LUNCHEON WITH KEYNOTE:</b> <i>Leading with Compassion: LGBTQ+ Inclusive Nursing Communication in Serious Illness Care</i> | CAROLINA E  |
| 12:45 - 1:45                                  | <b>AMA LUNCHEON</b>   | GOVERNORS 4-6   |
| 1:45 - 2:45                                   | <b>PLENARY III:</b> <i>Smoking Out Corporate Tobacco's Influence on Queer Health</i>  | SYMPHONY BALLROOM   |
| <b>CONCURRENT SESSION VII: WORKSHOPS</b>      |   |   |
| <i>WORKSHOP TITLE</i>                         |   | <i>SESSION ROOM</i>   |
| 3:00 - 4:00                                   | <i>DEA Abolition and Queer Liberation</i>   | CAROLINA AB   |
|   | <i>Pharmacists Role in Gender-Affirming Care</i>  | CAROLINA C  |
|   | <i>Incorporating LGBTQ+ Content into Nursing Education Using Modifiable Unfolding Case Studies</i>  | MECKLENBERG 1   |
|   | <i>Building Community Networks for Gender Affirming Care</i>  | MECKLENBERG 2   |
|   | <i>Asexual-Affirming Therapy: Practice Recommendations for Mental Health Professionals and the Interdisciplinary Care Team</i>                    | MECKLENBERG 3   |
| <b>CONCURRENT SESSION VII: ORAL RESEARCH</b>  |   |   |
| <b>SESSION ROOM: SYMPHONY 2</b>               |   | <b>SESSION ROOM: SYMPHONY 3</b>   |
| 3:00 - 4:00                                   | <i>Development and Implementation of a LGBTQ+ Culturally Competent Care Checklist for Organizational Staff and Patients</i>                       | <i>An Intersectional Analysis of Transgender and Nonbinary Young Adult Experiences of Healthcare Mistreatment and Respect</i> |
|   | <i>Patient Stories of the Importance of Receiving LGBTQ+ Culturally Competent Care - What We Do Matters</i>                                       | <i>Queer Health Pod: Reflections from 2 Seasons of Community-Facing Queer Health Content</i>                                  |
|   | <i>Views on Culturally Responsive Healthcare for LGBTQ Patients among a Multidisciplinary Sample of Healthcare Providers</i>                      | <i>Understanding the Impact of Inclusive Healthcare Practices on the General Public</i>                                       |
| 3:00 - 5:25                                   | <b>RESEARCH POSTER SESSION B</b>  | SYMPHONY 1  |
| <b>CONCURRENT SESSION VIII: WORKSHOPS</b>     |   |   |
| <i>WORKSHOP TITLE</i>                         |   | <i>SESSION ROOM</i>   |
| 4:15 - 5:15                                   | <i>The Ethics of Self-Care for Health and Mental Health Care Providers</i>  | CAROLINA AB   |
|   | <i>Building Partnerships for Affirming SOGI Data Collection in Health Care Institutions</i>   | CAROLINA C  |
|   | <i>PRIDE TALK: A Novel Framework for Compassionate Serious Illness Conversation with LGBTQI+ Communities</i>                                      | MECKLENBERG 1   |
|   | <i>Enhancing Gender-Affirming Care through Electronic Health Records: A Multidisciplinary Approach</i>  | MECKLENBERG 2   |
|   | <i>Affirming Black Transgender Children: A Holistic Approach to Gender Affirmation and Inclusive Healthcare</i>                                   | MECKLENBERG 3   |
| <b>CONCURRENT SESSION VIII: ORAL RESEARCH</b> |   |   |
| <b>SESSION ROOM: SYMPHONY 2</b>               |   |   |
| 4:15 - 5:15                                   | <i>Everything Transitions': Exploring Black Transgender Women's Journeys with Gender-Affirming Hormone Therapy</i>                                |   |
|   | <i>Increasing Cervical Cancer Screening Rates for Transmasculine Individuals: A Feasibility Study</i>   |   |
|   | <i>Analysis of LGBTQIA+ Education in Genetic Counseling Training Programs: Strengths, Opportunities &amp; Barriers</i>                            |   |
| 5:30 - 6:30                                   | <b>PLENARY IV:</b> <i>The Landscape of Medical Care for Trans Youth: Navigating and Fighting Back</i>   | SYMPHONY BALLROOM   |
| 6:30 - 6:45                                   | <b>CLOSING REMARKS</b>  | SYMPHONY BALLROOM   |
| 7:00 - 8:00                                   | <b>LESBIAN HEALTH FUND RECEPTION</b>  | CJ'S SPEAKEASY  |
| 7:00 - 8:15                                   | <b>MOVIE NIGHT: EVERYBODY'S WORK</b>  | CAROLINA D  |
| 9:00 - 11:00                                  | <b>CITY LIGHTS NIGHT</b>  | CITY LIGHTS ROOFTOP BAR   |

# WEDNESDAY, OCTOBER 2: DAY 3



|   |   |  |
|---|---|--|
| 8:30 - 8:45                                 | OPENING REMARKS   | SYMPHONY BALLROOM  |
| 8:45 - 9:45                                 | <b>PLENARY V:</b><br><i>State of the Science: LGBTQ+ Health</i>   | SYMPHONY BALLROOM  |
| <b>CONCURRENT SESSION IX: WORKSHOPS</b>     |   |  |
| <i>WORKSHOP TITLE</i>                       |   | <i>SESSION ROOM</i>  |
| 10:00 - 11:00                               | <i>Finding Your Voice: Interactive Workshop with Voice Exploration</i>  | CAROLINA AB  |
|   | <i>Restorative Justice in Medicine</i>  | MECKLENBERG 1  |
|   | <i>Operationalizing 'LGBTQ Affirming Care': Combining Individual and Structural Interventions to Improve Access and Quality</i>                                 | MECKLENBERG 2  |
|   | <i>Transitioning to Allyship: The Journeys of Two Transgender Physicians Boosting Allyship in Emergency Medicine</i>  | MECKLENBERG 3  |
| <b>CONCURRENT SESSION IX: ORAL RESEARCH</b> |   |  |
| <i>SESSION ROOM: SYMPHONY 2</i>             |   | <i>SESSION ROOM: SYMPHONY 3</i>  |
| 10:00 - 11:15                               | <i>In Pursuit of Representation A Quantitative Analysis of Flourishing, and Associated Factors, for LGBTQ+ Graduate Students Pursuing Careers in Healthcare</i> | <i>Innovations in Medical Education and LGBTQ+ Health Equity: Establishing a Student-Driven, Free Sexual Wellness Clinic</i> |
|   | <i>A Year in Review: Growth of the GLMA Health Professionals in Training Curriculum Reform Committee</i>  |  |
|   | <i>Mentorship for Young Gay Men in Hong Kong: A Pilot Mixed-Methods Randomized Controlled Trial</i>   | <i>Needs and Experiences Related to Alt-Sex Among Health Professionals</i>   |
| 11:15 - 12:15                               | <b>PLENARY VI:</b><br><i>Section 1557 of the ACA: A Focus on LGBTQ+ Communities</i>   | SYMPHONY BALLROOM  |
| 12:15 - 12:20                               | CLOSING REMARKS   | SYMPHONY BALLROOM  |
| 12:30 - 2:00                                | GLMA MEMBER LUNCHEON  | CAROLINA CDE   |

## CLAIMING CME/CE CREDITS

Check your email after the close of the conference for a link to the conference evaluation and Live CME/CE credit claim form. CME/CE credits must be claimed online by **October 31, 2024**; after this time CME/CE credit for live sessions will no longer be available.

All plenary sessions will be recorded and offered for on-demand CME/CE credit until **November 30, 2024**. Learners who participated in the live GLMA conference may only claim credit for sessions in this on-demand archive that they did not attend live.

**PLEASE SEE CME/CE INFO PACKET TO LEARN MORE**



# MONDAY PLENARIES



## PLENARY I

### UNDERSTANDING LGBTQ+ YOUTH HEALTH AND WELL-BEING: KEY FINDINGS FROM THE 2023 YOUTH RISK BEHAVIOR SURVEY

Monday, September 30  
9:30-10:30 am

Join us for the plenary session, "Understanding LGBTQ+ Youth Health and Well-being: Key Findings from the 2023 Youth Risk Behavior Survey" led by Kathleen Ethier, PhD. This session promises to provide valuable insights into fostering the well-being of LGBTQ+ youth.



Kathleen Ethier, PhD

She/Her  
Director,

Division of Adolescent and  
School Health Centers for  
Disease Control & Prevention

## PLENARY II

### INTERSECTIONALITY IN AGING: THE UNIQUE EXPERIENCES OF BLACK LGBTQ+ OLDER ADULTS

Monday, September 30  
5:30-6:30 pm

In this enlightening fireside chat titled "Intersectionality in Aging: The Unique Experiences of Black LGBTQ+ Older Adults" led by Cassandra Cantave Burton from AARP, Porsha Hall, EdD, MPH, MA, and Janyce Jackson Jones, MDiv. Together, they will explore the multifaceted challenges and experiences faced by Black LGBTQ+ older adults, shedding light on the intersection of race, sexual orientation, gender identity, and aging.



Cassandra  
Cantave Burton

She/Her  
Sr. Research Advisor,  
AARP



Porsha Hall,  
EdD, MPH, MA

She/Her  
Vice Board Chair,  
ZAMI NOBLA



Janyce Jackson Jones

She/Her  
President,  
ZAMI NOBLA  
NC State Chapter

# TUESDAY PLENARIES



## PLENARY III

### SMOKING OUT CORPORATE TOBACCO'S INFLUENCE ON QUEER HEALTH

Tuesday, October 1  
1:45-2:45 pm



**NFN Scout, PhD**  
(He/They)  
Executive Director,  
National LGBTQI+  
Cancer Network



**Brian King, PhD, MPH**  
(He/Him)  
Director,  
FDA Center for Tobacco  
Products

**JOIN US IN THE SYMPHONY BALLROOM FOR ALL PLENARY SESSIONS!**

This fireside chat titled "Unveiling Corporate Tobacco's Impact on Queer Health," is presented by NFN Scout, PhD, and Brian King, PhD, MPH. This session will delve into the ways corporate tobacco influences the health of queer communities. Don't miss this opportunity to gain valuable insights from leading professionals in the field.

## PLENARY IV

### THE LANDSCAPE OF MEDICAL CARE FOR TRANS YOUTH: NAVIGATING & FIGHTING BACK

Tuesday, October 1  
1:45-2:45 pm

This exciting panel session, "The Landscape of Medical Care for Trans Youth: Navigating and Fighting Back" featuring Lynly S. Egyes, Esq. Noah Granade, MSW, LCSW, Kat Rohn, and Henry Ng, MD, MPH, will delve into the critical issues surrounding medical care for trans youth. Moderated by Alex Sheldon, MA, this discussion will explore the landscape of gender-affirming care, challenges faced by health professionals and their trans youth patients, and strategies for advocacy.

**PANEL MODERATOR**




**Alex Sheldon, MA**  
They/Them  
Executive Director, GLMA




**Lynly S. Egyes, Esq**  
She/Her  
Legal Director,  
Transgender Law Center



**Kat Rohn**  
They/She  
Executive Director,  
OutFront Minnesota



**Noah Granade, MSW, LCSW**  
He/Him  
Psychotherapist,  
Rooted Therapy



**Henry Ng, MD, MPH**  
They/He  
Director,  
Transgender Surgery & Medicine  
Program and Center for LGBTQ+  
Care at the Cleveland Clinic

# WEDNESDAY PLENARIES



## PLENARY V STATE OF THE SCIENCE: LGBTQ+ HEALTH

Wednesday, October 2  
8:45-9:45am

**JOIN US IN THE  
SYMPHONY BALLROOM  
FOR ALL PLENARY SESSIONS!**



**Carl G. Streed, Jr.  
MD, MPH**

(He/Him)

Associate Professor of Medicine,  
Boston University Chobanian and  
Avedisian School of Medicine



**Mahri Bahati, MPH**

(She/Her)

Senior LGBTQIA+ Community  
Engagement Specialist  
PRIDENet

This session, "State of The Science: LGBTQ+ Health," is presented by Carl G. Streed Jr., MD, MPH and Mahri Bahati, MPH. Don't miss this chance to gain a deeper understanding of the science and innovations shaping the future of LGBTQ+ health.

## PLENARY VI SECTION 1557 OF THE ACA: A FOCUS ON LGBTQ+ COMMUNITIES

Wednesday, October 2  
11:15-12:15pm

**LEARN ABOUT EARNING  
CREDIT FOR ATTENDING  
PLENARY SESSIONS IN THE  
CME/CE INFO PACKET**



**Kellan Baker,  
PhD, MPH, MA**

(He/Him)

Executive Director,  
Whitman-Walker Institute



**Melanie Fontes Rainer,  
JD, MSME, BSBA**

(She/Her/ella)

Director of the Office  
for Civil Rights  
U.S. Department of  
Health & Human Services

This conversation on "Section 1557 of the ACA: A Focus on LGBTQ+ Communities" will feature discussion from two distinguished experts: Kellan Baker, PhD, MPH, MA, and Melanie Fontes Rainer, JD, MSME, BSBA.

# RESEARCH POSTERS: GROUP A



## VISIT THE RESEARCH POSTER HALL IN SYMPHONY 1

| MONDAY, SEPTEMBER 30, 2024   |               | 3:00 - 5:00 |
|--|---------------|-------------|
| RESEARCH POSTER HALL   | SYMPHONY 1    |             |
| POSTER TITLE   | POSTER NUMBER |             |
| <i>Real-world Dolutegravir + Lamivudine Use in Treatment-Naive People With HIV-1 and Low CD4+ Cell Count or High Viral Load</i>  | A1            |             |
| <i>Review of Real-world Experience With Dolutegravir + Lamivudine (DTG + 3TC) in People With HIV-1 Aged 50 Years</i>   | A2            |             |
| <i>Barriers to Quality Healthcare for Transgender and Gender Non-Conforming Adults</i>   | A3            |             |
| <i>Mental Health Improvements in a Large National Cohort through Telehealth-Enabled Hormone Therapy at FOLX</i>  | A4            |             |
| <i>Insights from Six Years of Ongoing Efforts to Improve How a Medical School Addresses GSD Care</i>   | A5            |             |
| <i>LGBTQ+ Cultural Competency: Implementing Nurse Educator Preparation Workshops for Inclusionary Curriculum</i>   | A6            |             |
| <i>Introducing an Educational Simulation to Integrate LGBTQ+ Cultural Awareness into Psychiatric Nursing Care</i>  | A7            |             |
| <i>Interdisciplinary conversations on LGBTQ+ health': Experiences and Lessons from an Inaugural LGBTQ+ Research Symposium</i>  | A8            |             |
| <i>Barriers and Facilitators to Access Gender Affirming Vaginoplasty for Transfeminine Individuals on a Surgery Waitlist</i>   | A9            |             |
| <i>LGBTQ+ Health Across the Lifespan: The Impact of Including LGBTQ+ Elders in the Curriculum for Healthcare Professionals</i>   | A10           |             |
| <i>Magnifying Trans/Non-Binary Experiences Within the LGBTQ Pennsylvania Health Needs Assessment</i>   | A11           |             |
| <i>Wellbeing Pamphlet: A Support Guide for LGBTQ+ Healthcare Professionals &amp; Trainees</i>  | A13           |             |
| <i>Sorry, No Results Found': Evaluation of LGBTQIA+ Inclusivity of U.S. Cancer Centers' Websites</i>   | A14           |             |
| <i>LIBERTAS, a Degendered and Transgender-Inclusive Phase 3 Study of Apalutamide (APA) Plus ntermittent vs continuous androgen deprivation therapy (ADT) in participants (pts) with metastatic hormone-sensitive prostate cancer (mHSPC)</i> | A15           |             |

# RESEARCH POSTERS: GROUP B



## VISIT THE RESEARCH POSTER HALL IN SYMPHONY 1

| TUESDAY, OCTOBER 1, 2024  |               | 3:00 - 5:00 |
|---|---------------|-------------|
| RESEARCH POSTER HALL  | SYMPHONY 1    |             |
| POSTER TITLE  | POSTER NUMBER |             |
| <i>Experiences with Self-Managed Gender-Affirming Hormone Therapy (GAHT) in the United States: A Qualitative Analysis of Reddit Posts</i> | <b>B1</b>     |             |
| <i>Clinical Care, Psychosocial Support &amp; Discussions of Sex &amp; Gender Among Pediatric Patients with Monosomy X</i>                 | <b>B2</b>     |             |
| <i>Clinical Efficacy of Complimentary Therapies in Treating HIV-Related Diarrhea: A Case Report</i>                                       | <b>B3</b>     |             |
| <i>Real-world Dolutegravir + Lamivudine Effectiveness and Tolerability in People Living With HIV: Review and Meta-analysis</i>            | <b>B4</b>     |             |
| <i>Developing and Implementing a Healthcare Elective to Enhance the Empathic and Compassionate Care of LGBTQIA+ Individuals</i>           | <b>B6</b>     |             |
| <i>Lessons Learned from Trailblazing Years in the Development of SGM Medical Education at UCSF</i>  | <b>B7</b>     |             |
| <i>We Have a Lot of Battles to Fight': The Experiences of Older, Black, Same-Gender-Loving Women During the COVID-19 Pandemic</i>         | <b>B8</b>     |             |
| <i>How Can Pre-Clinical Preparation to Care for LGBTQ+ Patients be Enhanced? Student Insight at a Midwest Medical School</i>              | <b>B9</b>     |             |
| <i>Caring for Patients with Hypoplasia of the Penis: Who's on the Team?</i>   | <b>B10</b>    |             |
| <i>Quality of Life in HIV Care: Implementing PozQoL in Specialty Pharmacy Practice</i>  | <b>B11</b>    |             |
| <i>Evaluation of a Pilot Service for Gender-Affirming Hormone Therapy Utilizing Primary Care Pharmacist Collaboration</i>                 | <b>B12</b>    |             |
| <i>Acceptability of an HIV PrEP Shared Decision-Making Tool for Diverse Populations and Healthcare Providers</i>                          | <b>B13</b>    |             |
| <i>Switch to Dolutegravir/Lamivudine Is Non-inferior to Continuing Tenofovir Alafenamide Regimens: TANGO Subgroup Analyses</i>            | <b>B14</b>    |             |
| <i>Hospitalizations and Transgender Patients in the United States</i>   | <b>B15</b>    |             |
| <i>Community and Healthcare Professional Perceptions of Methods of Collecting Gender Identity Data in Healthcare Settings</i>             | <b>B16</b>    |             |

# GLMA NURSING SECTION



In 2014, the Nursing Section became the first section established by GLMA, honoring the legacy and critical role of nurses in healthcare. The GLMA Nursing Section is a professional home for GLMA members who are LGBTQ+ and allied nurses, nursing students, and nurse practitioners dedicated to improving health care and the health of all LGBTQ+ individuals and families.

## NURSING SECTION LEADERSHIP

**Jeff Day,**  
DNP, AGPCNP-BC, CNEcl  
*Chair: GLMA Nursing Section*

**Shannon Avery-Desmarais,**  
PhD, RN, AGPCNP-C  
*Chair- Elect: GLMA Nursing Section*

*This year, for the first time, the Nursing Section has a **dedicated content track** at the Annual Conference! This move enables nursing professional members a more integrated role within GLMA's conference, allowing for richer collaboration and a stronger presence alongside interdisciplinary health professional teams.*

## NURSES ARE ON THE FRONTLINE IN THE FIGHT FOR LGBTQ+ HEALTH EQUITY!



**JOIN YOUR FELLOW ADVOCATES IN  
GLMA'S NURSING SECTION!**

### Education & Research

Advance LGBTQ+ competency in your field of practice

### Policy Advocacy

Ensure LGBTQ+ health equity through GLMA's policies and advocacy

### Organizational Climate

Cultivate LGBTQ+-affirming work environments

# NURSING TRACK



## EXPLORE CME/CE SESSIONS ALONG THE DEDICATED NURSING CONTENT TRACK

| NURSING TRACK CME/CE SESSIONS   |                |               |
|---|----------------|---------------|
| WORKSHOP TITLE  | SESSION NUMBER | SESSION ROOM  |
| <i>Advancing LGBTQ+ Cancer Care: Lessons from Establishing a Specialized Program at NCI-Designated Cancer Center</i>              | CSV            | MECKLENBERG 1 |
| <i>Transcend Expectations: Empowering Nurse Practitioners to Shape Trans-Affirmative Psychiatry</i>                               | CSVII          | MECKLENBERG 1 |
| <i>Incorporating LGBTQ+ Content into Nursing Education Using Modifiable Unfolding Case Studies</i>                                | CSVIII         | MECKLENBERG 1 |
| <i>PRIDE TALK: A Novel Framework for Compassionate Serious Illness Conversation with LGBTQ+ Communities</i>                       | CSVIII         | MECKLENBERG 1 |
| <i>What We Learned about Caregiving During the Early COVID-19 Pandemic: The Experiences of Same-Gender Loving Cisgender Women</i> | CSI            | SYMPHONY 3    |
| <i>Reckoning with Workplace Experiences of Transgender and Nonbinary Nurses through Digital Storytelling</i>                      | CSV            | SYMPHONY 2    |

Tuesday, October 1  
12:45 - 2:15

### NURSING TRACK KEYNOTE LEADING WITH COMPASSION: LGBTQ+ INCLUSIVE NURSING COMMUNICATION IN SERIOUS ILLNESS CARE

This keynote session is the highlight of the Nursing Content Track and will take place during GLMA's Nursing Section Luncheon, presented by Constance Dahlin, MSN, ANP-BC, ACHPN, FPNC, FAAN. Drawing on her vast expertise in palliative care, she will lead a session titled "Leading with Compassion: LGBTQ+ Inclusive Nursing Communication in Serious Illness Care."



**Constance Dahlin,**  
MSN, ANP-BC, ACHPN, FPCN, FAAN

(She/Her)

Faculty

University of Maryland, Graduate  
Studies in Palliative Care & Consultant  
to the Center to Advance Palliative Care

# CLINICAL CARE IN CONTEXT



| CLINICAL CARE IN CONTEXT CONTENT TRACK CME/CE SESSIONS  |                |               |
|---|----------------|---------------|
| WORKSHOP TITLE  | SESSION NUMBER | SESSION ROOM  |
| <i>Supporting Trans Peoples' Resilience and Resistance to State-Sanctioned Violence</i>                                       | CS I           | CAROLINA AB   |
| <i>A New PATH to Gender-Affirming Care</i>  | CS I           | MECKLENBERG 1 |
| <i>Decriminalizing Medicine: A Novel Approach to Medical Student Education About Criminalization in the Healthcare System</i> | CS II          | MECKLENBERG 1 |
| <i>The Current Policy Landscape and its Impact on LGBTQ+ Health</i>   | CS II          | MECKLENBERG 2 |
| <i>The Intersectionality of Identity for Indigenous 2SLGBTQ+ Individuals in the United States</i>                             | CS III         | MECKLENBERG 1 |
| <i>Leveraging Group Model Building to Delineate Moral Distress Experienced by Pediatric Gender-Affirming Care Providers</i>   | CS IV          | MECKLENBERG 1 |
| <i>Transcending Fear: Cultivating and Celebrating Gender Euphoria in Gender Affirming Care</i>                                | CS IV          | MECKLENBERG 2 |
| <i>Restorative Justice in Medicine</i>  | CS IX          | MECKLENBERG 1 |
| <i>Transitioning to Allyship: The Journeys of Two Transgender Physicians Boosting Allyship in Emergency Medicine</i>          | CS IX          | MECKLENBERG 3 |
| <i>Eating Disorders in The Gender-Nonconforming Community</i>   | CS V           | CAROLINA C    |
| <i>Recognizing Historical Injustices in Medicine and the New England Journal of Medicine: LGBTQIA+ Medical History</i>        | CS V           | MECKLENBERG 2 |
| <i>Developing a Framework for Teaching LGBTQIA+ Health Using a Casebook</i>   | CS VI          | CAROLINA C    |
| <i>Be SMART with Pride: Secure Gun Storage and Protecting LGBTQ+ Youth from Firearm Suicide</i>                               | CS VI          | MECKLENBERG 3 |
| <i>DEA Abolition and Queer Liberation</i>   | CS VII         | CAROLINA AB   |
| <i>Building Community Networks for Gender Affirming Care</i>  | CS VII         | MECKLENBERG 2 |
| <i>Building Partnerships for Affirming SOGI Data Collection in Health Care Institutions</i>                                   | CS VIII        | CAROLINA C    |
| <i>Enhancing Gender-Affirming Care through Electronic Health Records: A Multidisciplinary Approach</i>                        | CS VIII        | MECKLENBERG 2 |



# CLINICAL CARE IN CONTEXT

| ORAL RESEARCH SESSION TITLE   | SESSION NUMBER | SESSION ROOM |
|---|----------------|--------------|
| <i>Prevalence of Distal Hypospadias Diagnosis and Subsequent Medical Interventions in Pediatric Patients</i>  | CS I           | SYMPHONY 2   |
| <i>Visibility vs. Vulnerability: Assessing Comfort in Discussing Health Information Among Trans/Gender Diverse Adolescents</i>                                  | CS I           | SYMPHONY 2   |
| <i>Move with Pride: Examining Physical Activity Behaviors Among Young Adult Sexual Minority Women</i>   | CS I           | SYMPHONY 2   |
| <i>The Prevalence of Cardiovascular Disease and Associated Risk Factors among Sexual and Gender Minorities in Texas</i>   | CS II          | SYMPHONY 2   |
| <i>Intersecting Identities and Health: A Socio-Ecological Approach to Cardiovascular and Cognitive Health in Queer Latino</i>                                   | CS II          | SYMPHONY 2   |
| <i>LGBTQ Provider Database: A Descriptive Analysis of the Data</i>  | CS II          | SYMPHONY 3   |
| <i>Evaluation Of Information About Cardiovascular Implications of Gender-Affirming Care From Online Chat-based Conversation</i>                                 | CS II          | SYMPHONY 3   |
| <i>Isotretinoin Use in Transmasculine Patients and Its Implication on Chest Masculinization Surgery</i>   | CS III         | SYMPHONY 2   |
| <i>The Experience and Psychosocial Barriers of Breastfeeding/Chestfeeding in Gender Minorities</i>  | CS III         | SYMPHONY 2   |
| <i>Sexual, Gender, Racial, and Ethnic Identity Differences in Early Adolescent Disordered Eating</i>  | CS III         | SYMPHONY 3   |
| <i>Sexual and Gender Diverse Youth in Texas: Reports from the Texas Youth Depression and Suicide Research Network (TX-YDSRN)</i>                                | CS III         | SYMPHONY 3   |
| <i>The Impact of 'Don't Say Gay' Bill on Healthcare and Mental Health in Florida's LGBTQIA+ Community</i>   | CS III         | SYMPHONY 3   |
| <i>Gender Affirming Care Barriers of Florida's Anti-Transgender Laws and its Impact in Mental Health of Gender Minorities</i>                                   | CS IV          | SYMPHONY 2   |
| <i>Do Transgender People Really Have A Choice?: Barriers to Gender-Affirming Surgery in Non-Urban Populations</i>   | CS IV          | SYMPHONY 2   |
| <i>How do Sexual and Gender Minoritized Adults in the U.S. Perceive E-cigarette Risks and Taxes?</i>  | CS IV          | SYMPHONY 3   |
| <i>Social Correlates of Low-Risk Perception Towards Substance Use and Sexual Behaviors among MSM and Trans Women</i>  | CS IV          | SYMPHONY 3   |
| <i>Co-use of Cannabis and Nicotine Among Sexual and Gender Minority Compared to Cisgender Heterosexual Counterparts</i>   | CS IV          | SYMPHONY 3   |
| <i>Mentorship for Young Gay Men in Hong Kong: A Pilot Mixed-Methods Randomized Controlled Trial</i>   | CS IX          | SYMPHONY 2   |
| <i>Needs and Experiences Related to Alt-Sex Among Health Professionals</i>  | CS IX          | SYMPHONY 3   |
| <i>Accessing Assisted Reproductive Technologies in Canada for 2SLGBTQ+ Black, Indigenous and People of Color</i>  | CS V           | SYMPHONY 3   |
| <i>Navigating the Healthcare System as a Transgender Person of Color</i>  | CS V           | SYMPHONY 3   |
| <i>Exploring Social Network Composition and HIV Service Perceptions among Black Cisgender Men and Transgender Women</i>   | CS V           | SYMPHONY 3   |
| <i>Characteristics and Experiences of Gender-Affirming Care of Korean Transgender Adult: Interim Analysis of Korean Initiative for Transgender Health Study</i> | CS VI          | SYMPHONY 2   |
| <i>Harmony in Diversity: Exploring the Complex Dynamics of Religion, Coming Out, and Mental Health</i>  | CS VI          | SYMPHONY 3   |
| <i>The Impact of Florida Legislation on Mental Health of Transgender, Non-Binary, and Gender Non-Conforming Youth</i>   | CS VI          | SYMPHONY 3   |
| <i>Illuminating the Behavioral Health Needs of Transgender and Non-Binary Youth</i>   | CS VI          | SYMPHONY 3   |
| <i>An Intersectional Analysis of Transgender and Nonbinary Young Adult Experiences of Healthcare Mistreatment and Respect</i>                                   | CS VII         | SYMPHONY 3   |
| <i>Everything Transitions': Exploring Black Transgender Women's Journeys with Gender-Affirming Hormone Therapy</i>  | CS VIII        | SYMPHONY 2   |
| <i>Increasing Cervical Cancer Screening Rates for Transmasculine Individuals: A Feasibility Study</i>   | CS VIII        | SYMPHONY 2   |

# PERSONAL & PROFESSIONAL DEVELOPMENT



## PERSONAL & PROFESSIONAL DEVELOPMENT CONTENT TRACK CME/CE SESSIONS

| WORKSHOP TITLE  | SESSION NUMBER | SESSION ROOM  |
|---|----------------|---------------|
| <i>Combating Mis- and Disinformation about Transgender Medical Care</i>   | CS II          | MECKLENBERG 3 |
| <i>Working with the US Preventive Services Task Force</i>   | CS III         | CAROLINA C    |
| <i>Enhancing Clinician Expertise &amp; Advancing Health Equity for LGBTQIA+ Patients &amp; Communities Through Fellowship Programs</i>  | CS III         | MECKLENBERG 3 |
| <i>Maximizing Impact: Leadership Opportunities in Health Professional Associations</i>  | CS IV          | CAROLINA C    |
| <i>Finding Your Voice: Interactive Workshop with Voice Exploration</i>  | CS IX          | CAROLINA AB   |
| <i>Equality Rising in the Workplace: Using Data to Find (or Create) an LGBTQ+ Employer that Embraces You</i>  | CS V           | MECKLENBERG 3 |
| <i>Intermediaries as Interventions: Developing Models for Supporting Health and Human Service Leaders Addressing Racial and Cultural Competency Gaps.</i>   | CS VI          | CAROLINA AB   |
| <i>Pharmacists Role in Gender-Affirming Care</i>  | CS VII         | CAROLINA C    |
| <i>The Ethics of Self-Care for Health and Mental Health Care Providers</i>  | CS VIII        | CAROLINA AB   |
| ORAL RESEARCH SESSION TITLE   | SESSION NUMBER | SESSION ROOM  |
| <i>How Organizational Staff Hypothesize Salary Levels Comparing Marginalized to Privileged Groups in the Workplace</i>  | CS V           | SYMPHONY 2    |
| <i>Persistent Conversion Efforts in Lebanese Healthcare: A Mixed Method Study</i>   | CS VI          | SYMPHONY 2    |
| <i>We Don't Fully Understand Their Needs: Healthcare Practitioner Insights on Gender Affirming Care for Trans and Gender Diverse Students at Public University Clinics in the Western Cape, South Africa.</i> | CS VI          | SYMPHONY 2    |
| <i>Queer Health Pod: Reflections from 2 Seasons of Community-Facing Queer Health Content</i>  | CS VII         | SYMPHONY 3    |
| <i>Analysis of LGBTQIA+ Education in Genetic Counseling Training Programs: Strengths, Opportunities &amp; Barriers</i>  | CS VIII        | SYMPHONY 2    |
| <i>In Pursuit of Representation A Quantitative Analysis of Flourishing, and Associated Factors, for LGBTQ+ Graduate Students Pursuing Careers in Healthcare</i>   | CS IX          | SYMPHONY 2    |
| <i>A Year in Review: Growth of the GLMA Health Professionals in Training Curriculum Reform Committee</i>  | CS IX          | SYMPHONY 2    |

# STANDARDS OF CARE



| STANDARDS OF CARE CONTENT TRACK CME/CE SESSIONS  |                |               |
|--|----------------|---------------|
| WORKSHOP TITLE   | SESSION NUMBER | SESSION ROOM  |
| LGBTQ+ Advance Care Planning   | CS I           | MECKLENBERG 2 |
| Anal Cancer Screening Guidelines: Reducing the Incidence of HPV Related Anal Cancer in Men Who Have Sex with Men.        | CS I           | MECKLENBERG 3 |
| Unlocking PrEP: Equipping Clinicians and Empowering Communities for HIV Prevention                                       | CS II          | CAROLINA AB   |
| Meta-therapy of Gender Care: A Trans Clinician's Take On Therapeutic Dialogue  | CS III         | MECKLENBERG 2 |
| Pride at All Ages: Building a Medical Home for LGBTQIA+ Older Adults   | CS IV          | CAROLINA AB   |
| Meeting Them Where They Are: Implementing Telehealth Services in a HIV Clinic to Increase LGBTQ+ Patient Engagement      | CS IV          | MECKLENBERG 3 |
| Operationalizing 'LGBTQ Affirming Care': Combining Individual and Structural Interventions to Improve Access and Quality | CS IX          | MECKLENBERG 2 |
| The Companionship Model for Gender-Affirming Clinicians  | CS V           | CAROLINA AB   |
| PROJECT RESPECT: Promoting Respectful and Inclusive Serious Illness Care for the LGBTQ+ Community                        | CS VI          | MECKLENBERG 2 |
| Asexual-Affirming Therapy: Practice Recommendations for Mental Health Professionals and the Interdisciplinary Care Team  | CS VII         | MECKLENBERG 3 |
| Affirming Black Transgender Children: A Holistic Approach to Gender Affirmation and Inclusive Healthcare                 | CS VIII        | MECKLENBERG 3 |
| ORAL RESEARCH SESSION TITLE  | SESSION NUMBER | SESSION ROOM  |
| Shadows Over Care: Exploring the Adverse Effects of SB1580 on LGBTQ+ Access to Care and Mental Health Disparities        | CS I           | SYMPHONY 2    |
| Establishing Best Practices for Ayurvedic Culturally Competent Healthcare of the LGBTQ+ Community                        | CS I           | SYMPHONY 3    |
| Identifying Persistent and Evolving Gaps in Inclusive Sexual History-Taking based on Longitudinal Assessment Data        | CS II          | SYMPHONY 3    |
| Experience of Induced Lactation in a Transgender Woman: Analysis of Human Milk and a Suggested Protocol                  | CS III         | SYMPHONY 2    |
| The Voice and Communication Goals Self-Assessment for All People (VOCAP): Development and Findings                       | CS IV          | SYMPHONY 2    |
| Innovations in Medical Education and LGBTQ+ Health Equity: Establishing a Student-Driven, Free Sexual Wellness Clinic    | CS IX          | SYMPHONY 3    |
| Development of a Harm Reduction Simulation to Decrease Stigma Toward LGBTQ+ Patients with Opioid Use Disorder            | CS V           | SYMPHONY 2    |
| Development and Implementation of a LGBTQ+ Culturally Competent Care Checklist for Organizational Staff and Patients     | CS VII         | SYMPHONY 2    |
| Patient Stories of the Importance of Receiving LGBTQ+ Culturally Competent Care - What We Do Matters                     | CS VII         | SYMPHONY 2    |
| Views on Culturally Responsive Healthcare for LGBTQ Patients among a Multidisciplinary Sample of Healthcare Providers    | CS VII         | SYMPHONY 2    |
| Understanding the Impact of Inclusive Healthcare Practices on the General Public   | CS VII         | SYMPHONY 3    |

# Medscape's Commitment to Public Health and Wellness

Explore Medscape's dedicated learning centers, designed to address crucial educational needs in public health. Join us in advancing knowledge and improving patient outcomes with our free CME/CE activities.



## MENTAL HEALTH & WELLNESS

Launched Feb 2021



**181**  
Activities to date



## RARE DISEASES

Launched Sep 2020



**317**  
Activities to date



## HEALTH EQUITY

Launched Feb 2021



**109**  
Activities to date



### PASSIONATE ABOUT MEDICAL EDUCATION?

If you're passionate about advancing medical education and enhancing patient care, we invite you to join our CME programs as expert faculty. Contact Lindsey Gardner, MPP, to learn more and get involved.



### Lindsey Gardner, MPP,

Associate Director of Public Health,  
(M): +1 984 884 2325  
(E): lgardner@medscape.net



# Dignity 2024

## The Experience of LGBTQ+ Older Adults

New AARP research increases our understanding of the lived experience of LGBTQ+ adults age 45-plus in the areas of healthcare access, caregiving, isolation, and relationships.



To learn more, scan  
the QR Code or visit  
[aarp.org /LGBTQDignity](https://aarp.org/LGBTQDignity)



# EMPOWERED AGAINST MPOX

Mpox vaccination is recommended  
for at-risk individuals aged  $\geq 18$  years old

Gay, bisexual, and other men who  
have sex with men, transgender or  
nonbinary people with certain risk  
factors are among those at  
**highest risk for mpox**

**3 out of 4 at-risk**  
individuals are unvaccinated  
or have not completed the  
**2-dose series**

At Bavarian Nordic, a firm focus  
on vaccines stands at the core  
of everything we do.  
Visit [bnvaccines.com](https://bnvaccines.com) to learn more.



Learn more about  
mpox vaccination

© 2024 Bavarian Nordic Inc. All rights reserved.  
US-POX-2400005 | April 2024



Advancing the world of health™

Everything we do at BD is toward our purpose of  
advancing the world of health™. We understand  
that inclusion, diversity and equity is imperative to  
innovate new products, solutions and partnerships  
for the patients and communities we serve.



Undergraduate & Graduate  
Medical Education  
Northern California  
[residency-ncal.kp.org](https://residency-ncal.kp.org)



# #GLMA2024 SPONSORS & EXHIBITORS



At ViiV Healthcare, our commitment to inclusion and diversity starts with our mission to leave no person living with HIV behind. That means ensuring we are supporting people affected by HIV around the world, no matter their race, sexual orientation, ethnicity, gender or nationality. We do this through our breakthrough innovation, our diverse portfolio of medicines and through the work we do to partner with HIV communities and amplify the voices of people living with HIV. Inclusion and diversity is at the heart of our culture and how we operate as a company. We strive to bring together talented and diverse people whose unique experience, knowledge and personal perspectives make us stronger as a team and as a business. We also recognize the importance of affirming care when it comes to treating and preventing HIV. We are committed to advocating for a diverse medical workforce that reflects the patient population and can provide culturally appropriate care. To learn more about us, visit [viivhealthcare.com](http://viivhealthcare.com).



AARP is a nonprofit, nonpartisan organization that empowers people to choose how they live as they age.



The American Medical Association Foundation (the "Foundation") is the philanthropic arm of the American Medical Association ("AMA"); a 501(c)3 dedicated to recognizing outstanding medical leaders and supporting innovative community health initiatives. The AMA Foundation's mission is to bring together physicians and community to improve our nation's health.



Bavarian Nordic is a global vaccines company on a mission to help improve and protect lives through innovative vaccines. With 30 years of excellence in vaccine development and manufacturing, our purpose is driven by the people we serve and helping prepare them to take on their next adventure. As a trusted vaccine provider, we are committed to supporting you in helping protect your patients against some of the world's most urgent infectious disease challenges.



Gilead Sciences, Inc. is a biopharmaceutical company that has pursued and achieved breakthroughs in medicine for more than three decades, with the goal of creating a healthier world for all people. The company is committed to advancing innovative medicines to prevent and treat life-threatening diseases, including HIV, viral hepatitis, COVID-19, and cancer. Gilead operates in more than 35 countries worldwide, with headquarters in Foster City, California. For more than 30 years, Gilead has been a leading innovator in the field of HIV, driving advances in treatment, prevention, testing and linkage to care, and cure research. Today, millions of people living with HIV globally receive antiretroviral therapy provided by Gilead or one of the company's manufacturing partners.

# #GLMA2024 SPONSORS & EXHIBITORS



UpHouse is a marketing, PR and talent management agency in North America that exists to inspire the social consciousness of brands. We're a registered B Corporation and certified diverse supplier through the National LGBT Chamber of Commerce, and we are creative experts in intersectional marketing. We have worked with dozens of organizations advocating for increased funding, awareness or buy-in to move the needle on causes that often support vulnerable, overlooked or underserved communities.



We have won Anthem, Shorty and Telly awards for our work in advocacy and public awareness marketing and have worked with brands like the LA LGBT+ Chamber of Commerce, Pride Toronto, Canada's 2SLGBTQI+ Chamber of Commerce, Dynacare, Sexuality Education Resource Center, Survivor's Hope and more.

Most recently, we conducted a survey across the US and Canada to better understand how the 2SLGBTQI+ community feels about corporations being involved in Pride activities. The Study is called "Pride in Practice" and serves as a helpful resource for authentic allyship.



Compassion and Choices is a nonprofit organization that works across the nation in communities, state legislatures, Congress, courts and medical settings. We envision a society that affirms life and accepts the inevitability of death, embraces expanded options for compassionate dying, and empowers everyone to choose end-of-life care that reflects their values, priorities, and beliefs.



At Memorial Sloan Kettering Cancer Center (MSK), our specialized care teams provide personalized, compassionate, expert care to patients of all ages. Informed by basic research done at our Sloan Kettering Institute, scientists across MSK collaborate to conduct innovative translational and clinical research that is driving a revolution in our understanding of cancer as a disease and improving the ability to prevent, diagnose, and treat it. Visit [msk.org](http://msk.org) to learn more.



MDVIP leads the market in membership-based healthcare that goes far beyond concierge medicine services with a national network of more than 1,200 primary care physicians serving over 385,000 patients. Published research shows that the MDVIP model identifies more patients at risk for cardiovascular disease, delivers more preventive health services and saves the healthcare system hundreds of millions of dollars through reduced hospitalizations and readmissions. In response to growing consumer demand for a more personalized healthcare experience, hospital systems are incorporating the MDVIP model into their primary care offering. MDVIP also partners with employers to offer an executive health program as a benefit to their employees. The company has been certified by Great Place to Work since 2018 and is recognized by Fortune as one of the 2022 Best Workplaces in Healthcare. For more information, visit [www.mdvip.com](http://www.mdvip.com).

# #GLMA2024 SPONSORS & EXHIBITORS



BD is one of the largest global medical technology companies in the world and is advancing the world of health by improving medical discovery, diagnostics and the delivery of care. The company develops innovative technology, services and solutions that help advance both clinical therapy for patients and clinical process for health care providers. BD has 77,000 employees and a presence in virtually every country around the world to address some of the most challenging global health issues. BD helps customers enhance outcomes, lower costs, increase efficiencies, improve safety and expand access to health care.



For more than 25 years, the Campaign for Tobacco-Free Kids has fought to protect children and save lives from the #1 cause of preventable death: tobacco use. Our vision is a future free of the death and disease caused by tobacco. Because tobacco has killed enough.



For over 30 years, patients have turned to Castle Connolly as the official source of Top Doctors to find trusted, quality care. Our mission is to help people find the best healthcare by connecting patients with premier healthcare providers and hospitals. Although we ask physicians to consider many criteria when nominating their fellow providers, the premise is simple – as a doctor, where would you go if you needed care?

Castle Connolly is proud to partner with GLMA to present the annual Top LGBTQ+ Doctors list. This list celebrates the exceptional contributions and expertise of LGBTQ+ physicians, amplifying their voices and highlighting their vital role in advancing medical care.



Everytown is the largest gun violence prevention organization in America. For too long, life-saving laws have been thwarted by the gun lobby and by leaders who refuse to take common-sense steps that will save lives. But something is changing. Nearly 10 million mayors, moms, teachers, survivors, gun owners, students, and everyday Americans have come together to make their own communities safer. Everytown starts with you, and it starts in your neighborhood. By introducing evidence-based solutions in every town, we can end gun violence!



Our mission is to empower the LGBTQ+ and ally communities by offering inclusive, progressive, and enduring recovery programs that nurture and ensure dignity, promote diversity, and advocate for equitable access to whole-person healthcare.



# #GLMA2024 SPONSORS & EXHIBITORS



Novant Health is an integrated network of more than 850 locations, including 19 hospitals, more than 700 physician clinics and urgent care centers, outpatient facilities, and imaging and pharmacy services. This network supports a seamless and personalized healthcare experience for communities in North Carolina and South Carolina. Novant Health is nationally recognized for our unwavering commitment to safety and the highest quality care, and we serve as a catalyst for healthcare transformation through clinical trials, leading-edge research, innovative care delivery models and robust virtual care networks. The expertise and empathy of our 40,000 team members along with more than 8,300 independent and employed clinicians are at the heart of Our Cause as industry leaders caring for communities across the Carolinas. In 2023, Novant Health provided more than \$1.6 billion in community benefit, including financial assistance and services. For more information, visit [NovantHealth.org](https://www.novanthealth.org).



Founded in 1899, Philadelphia College of Osteopathic Medicine (PCOM) has trained thousands of highly competent, caring physicians, health practitioners and behavioral scientists who practice a “whole person” approach to care — treating people, not just symptoms. PCOM operates three campuses (PCOM, PCOM Georgia and PCOM South Georgia) and offers a variety of doctoral and graduate degrees. PCOM students learn the importance of health promotion, research, education and service to the community.



Pride Institute has been offering LGBTQ+ specific addiction treatment in Minnesota since 1986. We have a full continuum of care including residential, partial hospitalization and intensive outpatient programming specifically tailored to the LGBTQ+ population. Our staff are trained to focus on the unique challenges that LGBTQ+ individuals experience. To reduce barriers our facilities offer no cost, non-gendered housing components at all levels of care, we are in network with most insurance companies and we can assist with transportation. Due to our specialized services we see clients attend our program from all over the nation and look forward to supporting an LGBTQ+ person in your network on their recovery journey!



Kaiser Permanente exists to provide high-quality, affordable health care services and to improve the health of our members and the communities we serve.

# #GLMA2024 SPONSORS & EXHIBITORS



## LEGACY

Legacy is the leading digital fertility company for the LGBTQ+ community. We offer a mail-in sperm testing kit that provides a private and convenient way to assess fertility from the comfort of home. For those interested in preserving their fertility prior to treatment or for the purpose of future family planning, we provide secure sperm storage.

Legacy has an experienced, affirming care team led by members of the World Professional Organization of Transgender Health. Legacy is the preferred fertility preservation provider for the US Department of Veterans Affairs, leading employers and health plans, and transgender health programs around the country.



## PRIDEnet



PRIDEnet, based out of Stanford Medicine, catalyzes LGBTQIA+ health research. We do this through connecting community members with ways to participate in research and creating opportunities for community input to inform all stages of the research process. PRIDEnet supports the NIH's All of Us Research Program, an ambitious effort to gather health data from one million or more people living in the United States to accelerate research that may improve health, and The PRIDE Study, the first large-scale, long-term national health study of people who identify as LGBTQIA+, or another sexual or gender minority.

**PRIDEnet:** <https://pridenet.org>

**The PRIDE Study:** <https://pridestudy.org>

**All of Us Research Program:** <https://www.joinallofus.org/lgbtqia>

## HealthHIV

HealthHIV is a national non-profit working with healthcare organizations, communities, and providers to advance effective HIV, HCV, STI and LGBTQ health care, harm reduction and health equity through education and training, technical assistance and capacity building, advocacy, communications, and health services research and evaluation. HealthHIV leads the HealthHCV initiative, the National Center for Health Care Capacity Building, and the National Coalition for LGBTQ Health, as well as PleasePrepMe.org, AgingWithHIV.org, ReduceHarmDC.org, and the HIV Prevention Certified Provider (HIVPCP) Certification Program."



The American Association of Sexuality Educators, Counselors and Therapists (AASECT) is a not-for-profit, interdisciplinary professional organization. AASECT's mission is the advancement of the highest standards of professional practice for educators, counselors and therapists. With its history of impeccable standards for training, experience and ethical behavior, AASECT is increasingly recognized as the guardian of professional standards in sexual health.

# #GLMA2024 SPONSORS & EXHIBITORS



Advocate Health is the third-largest nonprofit integrated health system in the United States. Providing care under the names Advocate Health Care in Illinois, Atrium Health in the Carolinas, Georgia and Alabama, and Aurora Health Care in Wisconsin, Advocate Health is a national leader in clinical innovation, health outcomes, consumer experience and value-based care, with Wake Forest University School of Medicine serving as the academic core of the enterprise. Headquartered in Charlotte, North Carolina, Advocate Health serves 6 million patients and is engaged in hundreds of clinical trials and research studies. It is nationally recognized for its expertise in cardiology, neurosciences, oncology, pediatrics and rehabilitation, as well as organ transplants, burn treatments and specialized musculoskeletal programs. Advocate Health employs nearly 155,000 team members across 68 hospitals and over 1,000 care locations and offers one of the nation's largest graduate medical education programs with over 2,000 residents and fellows across more than 200 programs. Advocate Health is committed to diversity and inclusion every single day and in everything we do. By cultivating an atmosphere of acceptance and compassion, we create a welcoming environment where our patients can heal, our teammates can thrive, and our business can grow.



We're rebuilding healthcare as it should be. Founded in 2012, Oak Street Health, now part of CVS Health, specializes in helping older adults stay healthy and live life more fully. Our innovative care model goes beyond typical primary care to provide patients with comprehensive preventive care, including personalized wellness plans, integrated health services, and educational and social activities to support overall health and well-being.



The HRC Foundation – a tax-exempt 501(c)(3) organization – envisions a world where all LGBTQ+ people can participate fully in the systems that shape our daily lives. Through public education, research, and policy and practice change, the Foundation's impact can be felt in schools, on factory floors and corporate suites, and in hospitals and long-term care settings. The foundation's twelve different programs work in the following ways to effect change: Building understanding of LGBTQ+ people and shaping the public debate through public education, research and resources; Changing policies and practices through technical assistance and pioneering benchmarking tools; Empowering strategic partners, community leaders and allies to be stronger advocates for equality through capacity-building, training and innovative tools; and Leveraging relationships with these partners, advocates and allies to advance LGBTQ+ policy objectives at the local, state, national and international levels.

# #GLMA2024 SPONSORS & EXHIBITORS



Charlotte Trans Health (CTH) is a multidisciplinary collective of healthcare providers dedicated to reducing health and healthcare disparities for the transgender and gender diverse (TGD) community. Founded in 2012 as an informal consultation group, CTH has since evolved into a 501(c)3 nonprofit with medical, mental health, and allied health professional members. CTH's mission is to increase clinical competency and interdisciplinary collaboration among healthcare providers while enhancing access to competent, affirming care.



The Johns Hopkins School of Medicine Graduate Medical Education enterprise is dedicated to instilling in our residents and fellows the clinical, teaching, and research knowledge, attitudes, and skills critical to becoming future leaders in medicine. We value diversity, equity and inclusion, and foster the practice of teamwork, professionalism, and academic excellence. We accomplish these shared goals in a supportive and collaborative environment with world-class faculty mentorship. The Johns Hopkins School of Medicine Office of Graduate Medical Education table will be representing all residency and fellowship training programs at Johns Hopkins Medicine. Please come by our table to learn more about our training programs from faculty and residents. We look forward to meeting you!



At Penn Medicine, our purpose is to push the boundaries of knowledge, enhance well-being, and foster learning by conducting groundbreaking research, delivering exceptional patient care, and nurturing the growth of future healthcare professionals. We embrace diversity and inclusivity, encouraging innovation, critical thinking, and lifelong learning to uphold our longstanding commitment to excellence. Our vision is to cultivate a culture where everyone feels valued, supported, and connected, where equal opportunities for mentoring and research are accessible to all. Join our cause and make a meaningful impact. Together, we can strive for medical excellence through the principles of inclusion, diversity, and equity.



Geisinger  
Commonwealth  
School of Medicine

Geisinger College of Health Sciences (GCHS) is dedicated to advancing excellence in health professions education, research, community engagement, and clinical care. Located in Northeast Pennsylvania, GCHS is part of the Geisinger Health System, which is renowned for its innovative and integrated approach to healthcare delivery. GCHS is deeply committed to pursuing, promoting, and protecting an environment that values, respects, and empowers every individual in our community to thrive.

# #GLMA2024 SPONSORS & EXHIBITORS



VA's top clinical priority is Veteran suicide prevention. VA has a variety of important tools and resources, including the free, confidential Veterans Crisis Line, which connects Veterans in crisis and their families and friends with 24/7 support. To reach the Veterans Crisis Line, Dial 988 then Press 1, chat online at [VeteransCrisisLine.net/Chat](https://VeteransCrisisLine.net/Chat), or text 838255.



Frontier Nursing University (FNU), founded in 1939, has grown to become one of the largest not-for-profit universities in the United States for advanced nursing and nurse-midwifery education. As a pioneer with over three decades of experience in distance education, FNU remains at the forefront of innovation and technology with top-ranked, accredited programs delivered through online coursework and a clinical experience in the student's own community. Our graduate programs lead to a Master of Science in Nursing (MSN), a Post-Graduate Certificate or a Doctor of Nursing Practice (DNP). Specialties offered include nurse-midwifery, family nurse practitioner, women's health care nurse practitioner and psychiatric-mental health nurse practitioner. FNU also offers a Post-Master's DNP for certified nurse-midwives and nurse practitioners who already hold a national certification and want to pursue a DNP.



Medscape Education ([medscape.org](https://medscape.org)) is the leading destination for continuous professional development, consisting of more than 30 specialty-focused destinations offering thousands of free accredited CME and CE courses for physicians, nurses, and other healthcare professionals. WebMD Health Corp., an Internet Brands company, is at the heart of the digital health revolution that is transforming the healthcare experience for consumers, patients, healthcare professionals, employers, health plans, and health systems. Through public and private online portals, mobile platforms, and health-focused publications, WebMD delivers leading-edge content and digital services that enable and improve decision-making, support and motivate health actions, streamline and simplify the healthcare journey, and improve patient care."



Überlube premium silicone lubricant combines luxury with performance. We say feeling is everything.

For free samples go to [uberlube.com](https://uberlube.com)

# #GLMA2024 PARTNERS

TIPS FROM  
FORMER  
SMOKERS

10 YEARS

*Motivating people who smoke  
to quit for good.*

The CDC Tips campaign uses approaches to address health disparities in pursuit of health equity by increasing the reach, representation, receptivity, and accessibility of smoking cessation messages. Tips also increases awareness of free quit-smoking resources among adults – no matter who they are, where they live, or how much money they make. **GLMA is a proud CDC Tips Partner.**



**FEEDING  
CHARLOTTE**  
FOOD IS LOVE, NOT WASTE.

Feeding Charlotte rescues food from professional kitchens and shares it with nonprofit partner organizations with feeding programs. Typically, the wonderful food we provide is surplus, otherwise going to waste! We use a corps of volunteers to move this donated food and work with both large and small organizations. While we move in the same direction as food banks and food pantries, we focus on food that is already prepared, a niche that these similar groups haven't been able to focus on. We're fighting hunger and reducing waste!



QHP is a power-sharing podcast project created by three queer primary care doctors (Sam, Richard and Gaby). Our end-goal: to expand autonomy by bringing health knowledge directly to sexual and gender minority communities.

How we do it: we take your queer health questions and place them in conversation with the latest scientific evidence and expert advice. We don't always have all the answers, but we've always got puns.



Located in Miami, Florida, HealthMerch specializes in providing high-quality promotional products tailored to healthcare organizations needs across the nation. We assist healthcare providers in enhancing their branding and outreach efforts, particularly at outreach events and community engagements. Our focus is on creating meaningful connections between healthcare organizations and the diverse communities they serve, including LGBTQ+, HIV/AIDS initiatives, testing centers, physician offices, WIC programs, dental services, mental health boards, and many more. With a deep understanding of the unique needs and challenges within the healthcare sector, we offer customized promotional solutions that resonate with target audiences, fostering trust and engagement. Our products are designed to not only promote brands but also to support public health messaging, encourage participation in healthcare programs, and raise awareness for critical issues.



The Charlotte Regional Visitors Authority works to deliver memorable experiences that uniquely enrich the lives of visitors and residents. Through leadership in destination development, marketing and venue management expertise, the CRVA leads efforts to maximize the region's economic potential through visitor spending, creating jobs and opportunities for the community.

## THANK YOU TO ALL OUR SPONSORS & PARTNERS!

Your support is instrumental in the successful organization of this year's Annual Conference. Thanks to your contributions, we have been able to create an impactful and memorable event filled with enriching dialogue, productive networking, and innovative ideas. We are truly grateful for your commitment to LGBTQ+ health equity and your role in making this event possible.

# INVEST IN LIFETIME LEADERSHIP

Invest in your legacy as a leader  
in LGBTQ+ health equity!



## THANK YOU TO GLMA'S FIRST LIFETIME MEMBERS!

Jeremy Toler, MD

H. Ronald Kennedy, MD

Klint Peebles, MD, FAAD

Shail Maingi, MD

### JOIN GLMA AS A LIFETIME MEMBER TODAY!

As a Lifetime Member of GLMA, your one-time investment secures your enduring place within the GLMA community, offering continuous professional development opportunities throughout your career journey.

[www.glma.org](http://www.glma.org)



Primary care that  
makes you primary

**MDVIP**

## Creating a Culture of Diversity, Equity, and Inclusion



Become a *Nurse-Midwife or  
Nurse Practitioner*

[frontier.edu/diversity](http://frontier.edu/diversity)



FRONTIER NURSING  
UNIVERSITY®

# #GLMA2024 NOTES



---

---

---

---

---

---

---

---

---

---

---

---

---

---

---

---

---

---

---

---

---

---

---

## Empowering Recovery with Pride

B. Riley House is proud to advance LGBTQ+ health. Our specialized treatment programs cater to the unique needs of our community, providing a path to recovery that respects and celebrates every identity.

@reillycreatesite





# #GLMA2024 NOTES



---

---

---

---

---

---

---

---

---

---

---

---

---

---

---

---

---

---

---

---

---

---

---

---



WORKING  
TOGETHER TO END  
THE HIV EPIDEMIC  
FOR EVERYONE  
EVERYWHERE

Gilead is a proud sponsor of GLMA's  
Annual Conference on LGBTQ+ Health



**GILEAD** | HIV  
GileadHIV.com



# v||v healthcare

# north america

# medical affairs

We are ViiV Healthcare: a specialist pharmaceutical company 100% dedicated to HIV medicines and research and focused on people living with HIV and AIDS.

North America Medical Affairs is a key medical and scientific information partner focused on evidence, education, and engagement while serving healthcare professionals in the US.



Scan to visit the medical website at  
[viivhcmedinfo.com](https://viivhcmedinfo.com)



## evidence

- Identify and facilitate sites for early and Phase 3b/4 studies
- Investigator initiated studies
- Case reports
- Publications



## education

- Disease state
- ViiV medicines
- ViiV pipeline



## engagement

- Data updates
- Clinical needs or questions

### Visit the medical website to:

- Search scientific and medical information for ViiV Healthcare medicines
- Review ViiV Congress presentations and posters
- Locate a ViiV Medical Science Liaison
- Chat live with ViiV Healthcare Professionals\*
- Or call us at 1-888-226-8434\*

\*Available weekdays from 8am—6pm EST

**THANK YOU  
TO THE  
GLMA  
SPONSORS**

**PREMIER SPONSOR**



**GOLD SPONSORS**



**SILVER SPONSORS**



**BRONZE SPONSORS**

